



Rear 38-40 Main Street Greensborough, VIC

**Centrally located, Large fully fitted multi use office space**

Excellent climate controlled, Large multi purpose office space.

Location: Directly opposite Greensborough Plaza & Watermac Multi Activity Centre.

Public transport : Bus and train 5 minutes. Parking: 2 Secure undercover parking spaces.

Extensive public parking available. Staff amenities- M/F toilets and lunchroom

Rent PCM: \$3,271.67 plus GST

Rent PW: \$755.00 plus GST

Rent PA: \$39,260.00 plus GST

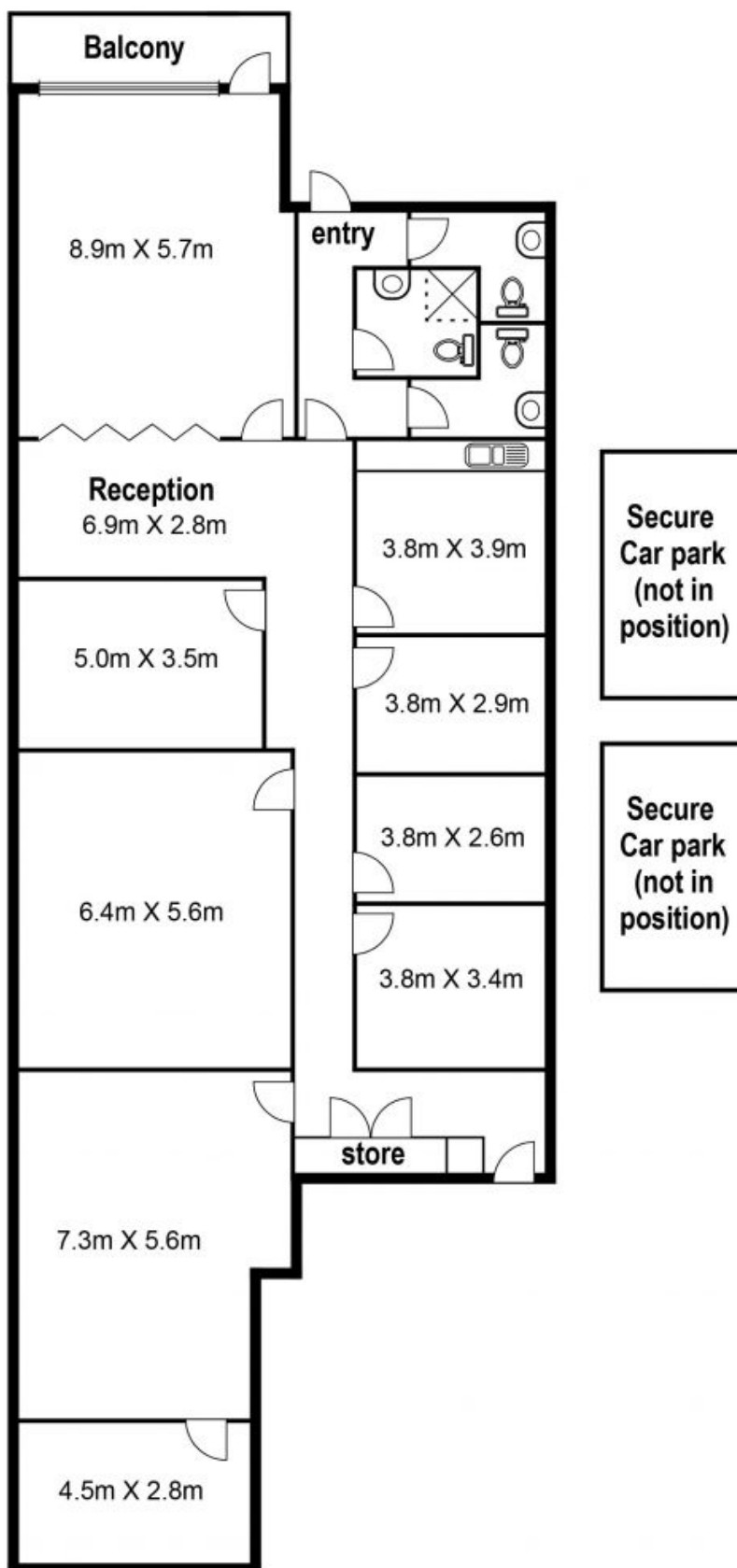


**Branko Agatanovic**

0448 035 565

branko.a@lovere.com.au

# Rear of, 38-40 Main Street, Greensborough



LOVE & CO

Rear of 38-40 Main Street, Greensborough, VIC  
This information has been obtained from a public source and is for general information only. It is not intended to be relied upon as to its accuracy. Any information of special interest should be obtained through independent verification.