



Level 1, 211 High Street Thomastown, VIC

PRIME OFFICE SPACE

- 1st Floor office space
- Total area 275sqm
- Entry foyer off High Street
- kitchen facilities
- Male & Female toilets
- Ducted heating & cooling
- Data cabling
- 3 Private car spaces at rear
- Free customer parking lot at rear

This is an exciting opportunity to move into a tightly held business precinct, located directly across the road from Thomastown train station. With signage opportunities in this terrific location and an attractive rental, this property should definitely be on your "must inspect" list.

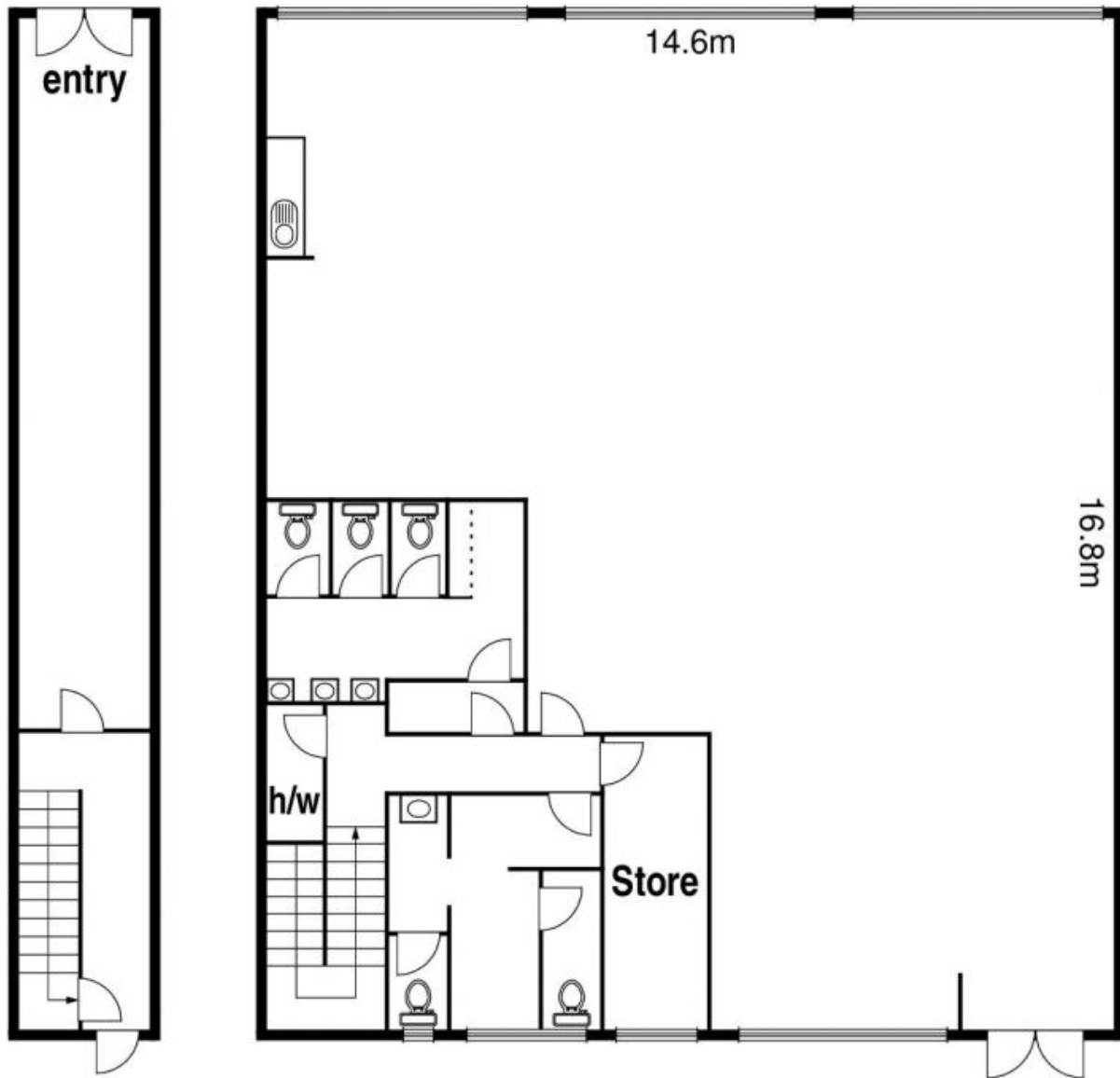


Michael Sabelberg

0450 554 317

michael.s@lovere.com.au

1/211-213 High Street, Thomastown



**Car
parking
(not in
postion)**

**Car
parking
(not in
postion)**

**Car
parking
(not in
postion)**

The information contained herein has been obtained through sources deemed to be reliable but cannot be guaranteed.



Level 1, 211 High Street Thomastown, VIC

As to its accuracy. Any information of special interest should be obtained through independent verification.