



667 Plenty Road Reservoir, VIC

### Modern Commercial Office Space in Prime Location

- Ground-level offices 212m2 approx
- Commercial 1 zoned
- Boardroom
- Staff amenities
- Private courtyard
- Two-car garage via ROW
- Close to transport

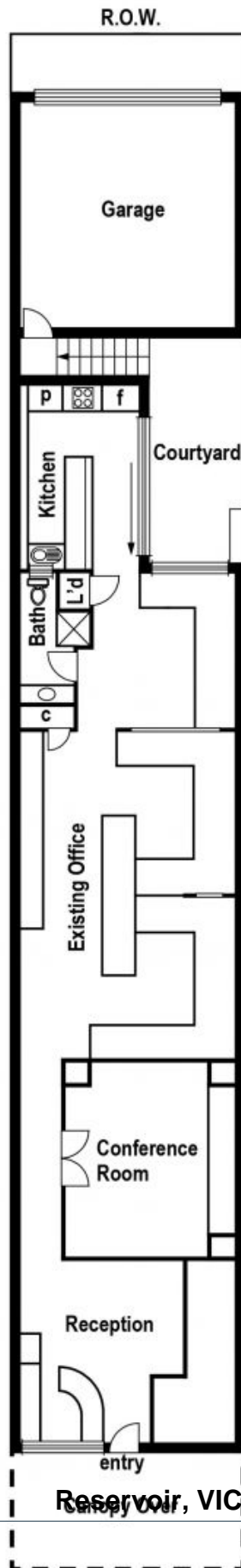


**Michael Sabelberg**

0450 554 317

michael.s@lovere.com.au

# Ground floor, 667 Plenty Road Reservoir



LOVE & CO