



12A Christie Avenue Mill Park, VIC



### Quality Living. Perfect Position

Quality, sophistication, style and lifestyle excellence seamlessly combine throughout this impressive near new home.

Set in landscaped surrounds featuring easy care no-mow turf and complete with a north facing alfresco in the private rear yard, surprisingly spacious dimensions deliver a main bedroom with fitted walk in robe and a stone detailed ensuite, two further bedrooms (both with fitted robes) stone finished bathroom and true laundry fitted with storage options.

A generous open plan living room, enjoying a seamless transition to the alfresco, integrates the slick kitchen showcasing an extensive use of stone to complement glossy soft close cabinetry stainless steel appliances and a stone detailed butler's pantry.

Comprising:

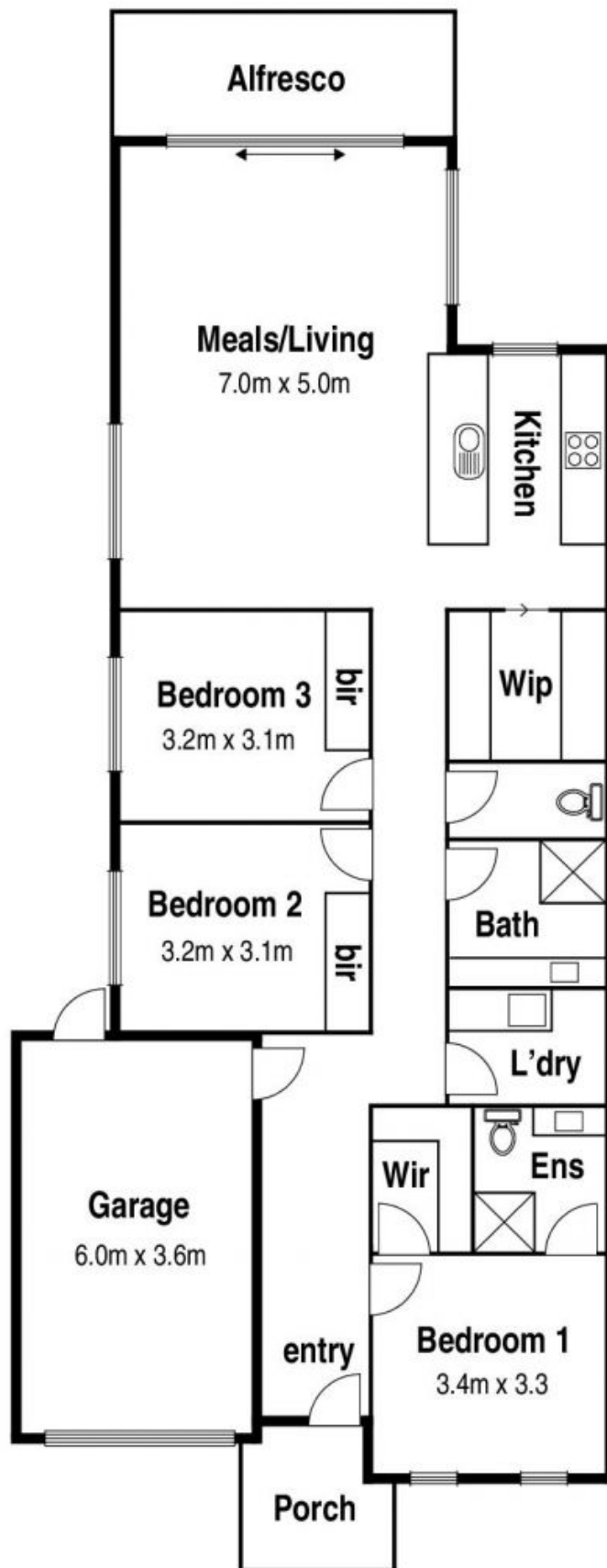
**Price:** \$430 Per Week



**Melba Kandi**

0417 163 119

lovemillpark@mail.inspectrealest



The information contained herein has been obtained through sources deemed to be reliable but cannot be guaranteed as to its accuracy. Any information of special interest should be obtained through independent verification.

12A Christie Avenue **Mill Park, VIC**