



2 Pulford Crescent Mill Park, VIC

3

2

2

Striking, Substantial And Certainly Stylish

A renovation with an immediately obvious commitment to quality, style and substance has transformed this three bedroom family home on a 617m2 allotment (approx) from basic to brilliant.

A no expense spared attitude sees the introduction of imported Italian tiles, a custom built solid-timber staircase and stone to the luxury ensuite, sumptuous family bathroom, family friendly fitted laundry and a striking kitchen. Boasting stainless steel appliances and cabinetry in on trend colors, it is perfectly placed for family living, sitting between the formal lounge room and the equally generous casual living meals which enjoys direct access to the large alfresco precinct in the rear yard.

Complementing the living and dining spaces is an open study. Its generous proportions and access to the alfresco introduce options as a sitting room or play room if desired.

Price: SOLD - \$800,000



Nick Kandi
0412 310 704
nick.k@lovere.com.au



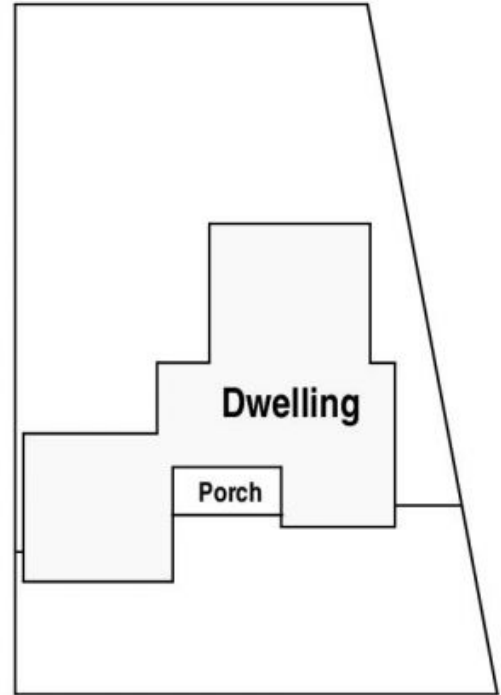
Roger Pettinella
0418 588 419
roger.p@lovere.com.au

2 Pulford Crescent, Mill Park

First Floor



Site Plan



The information contained herein has been obtained through sources deemed to be reliable but cannot be guaranteed as to its accuracy. Any information of special interest should be obtained through independent verification.



2 Pulford Crescent Mill Park, VIC