



1/282 Plenty Road Preston, VIC

NEAR NEW RETAIL/OFFICE SPACE WITH EXCELLENT EXPOSURE

- Available from 16th December 2017
- Modern retail space of 70 sq. m
- Disabled toilet
- Data Cabling
- 1 Undercover Secure Parking Space
- Commercial 1 Zoning

Superbly positioned on busy Plenty Road, short walk to tram and bus stop with proximity to Preston Town Centre and Bell Street.

Contact: Naomi Southurst 0425 72 98 72

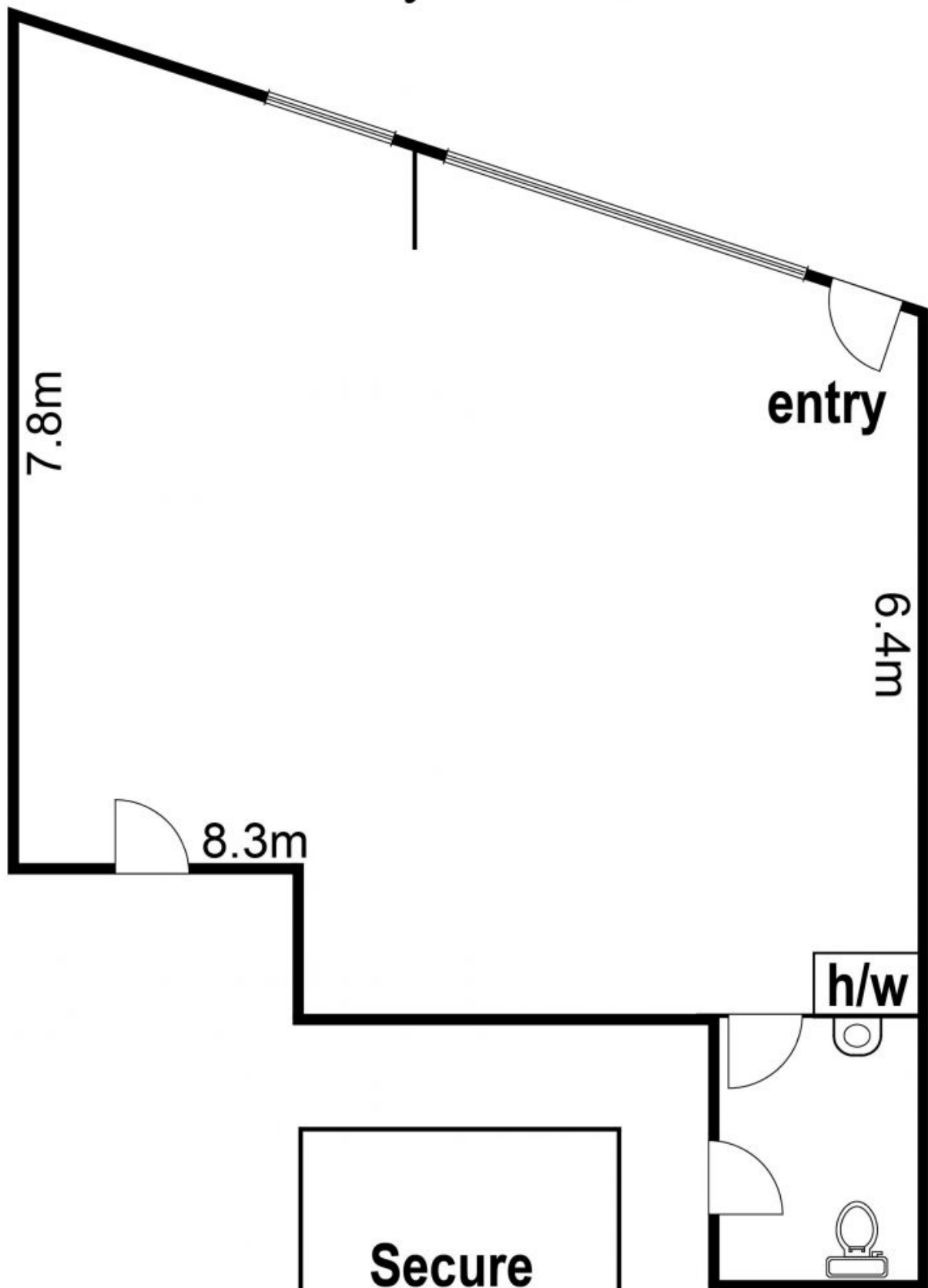
Rental: \$15,000.00pa, \$1,250.00pcm, \$287.67pw
(Plus GST and Outgoings)



Michael Love

0400 106 577
michael.l@lovere.com.au

1/282 Plenty Road, Preston



LOVE & CO

1/282 Plenty Road

Preston, VIC

**Secure
Car Parking
(not in
position)**