

1/247-251 Bay Street Port Melbourne, VIC

OPEN WED 12:30-1PM & SAT 9-9:30AM
INSPECT VIA LALOR STREET
IN THE HEART OF BAY S

Centrally located 1st Floor Offices of 115m2 approx, divided into 5 main rooms. Access is via Lalor Street and 1 reserved car space included.

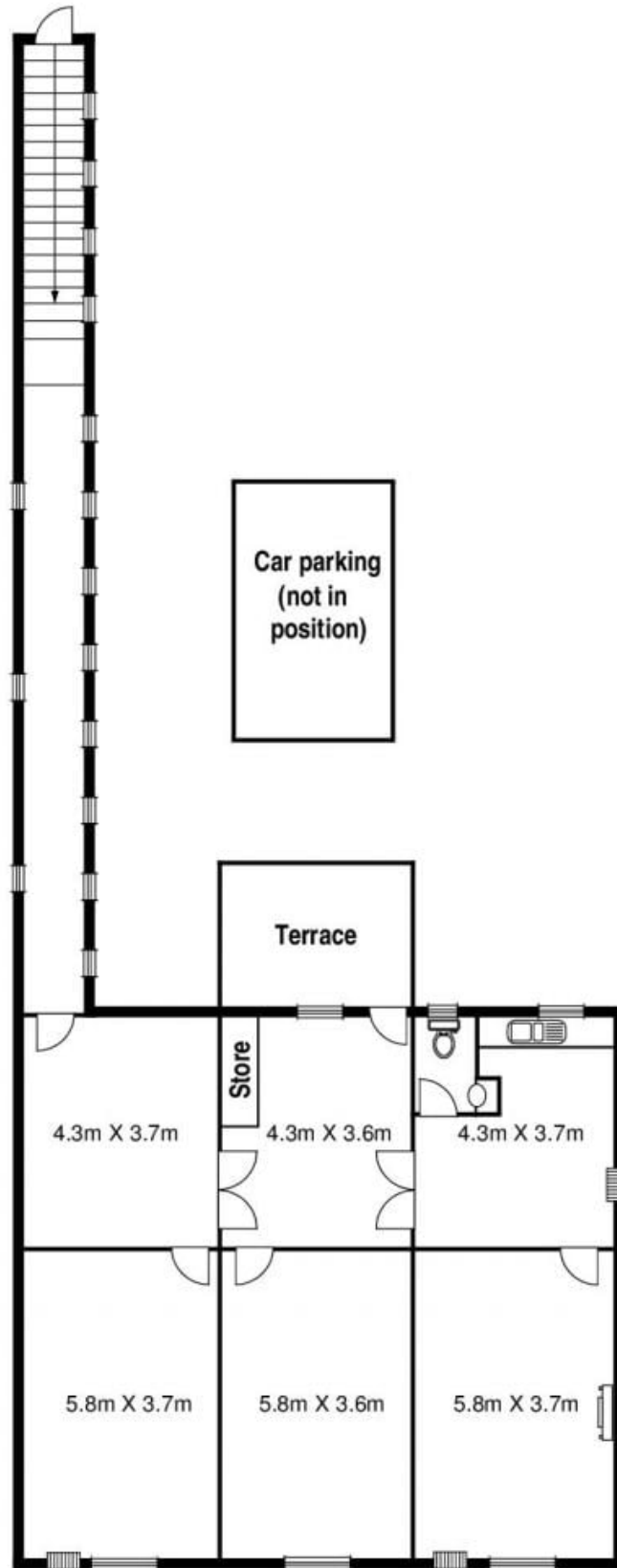
\$25,000 PA, Plus Outgoings
 AVAILABLE NOW



Graham Love

0418 534 450

graham.l@lovere.com.au



The information contained herein has been obtained through sources deemed to be reliable but cannot be guaranteed as to its accuracy. Any information of special interest should be obtained through independent verification.

1/247-251 Bay Street Port Melbourne, VIC

