



7/55-57 Malcolm Place Campbellfield, VIC

### Buy One... Buy Two - Ideal Storage Units

Unit 6 & 7 on offer; both Modern two storey, very attractive strata title storage unit of 38sqm approx

- Concrete tilt slab construction with rendered finish
- Private fenced area of 18sqm in front of each unit, large enough for a car, boat or caravan
- Communal toilet and amenities
- Roller shutter door vehicle access
- Electronic keypad entry to complex
- Power and external water to the unit

**Price:** \$68,000

**Council Rates:** \$0.00 p/q

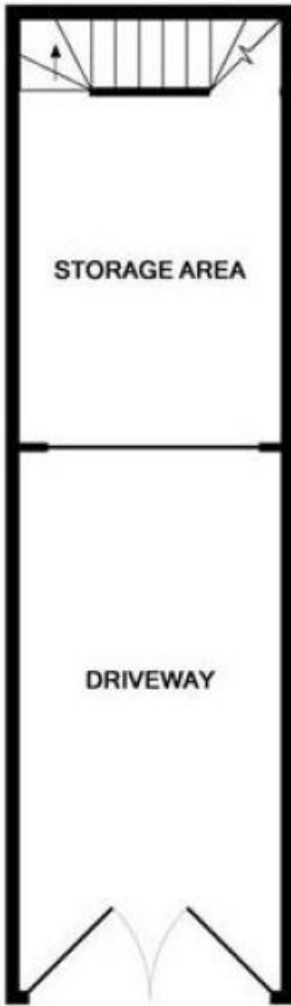
**Water Rates:** \$0.00 p/q

**Strata Rates:** \$0.00 p/q

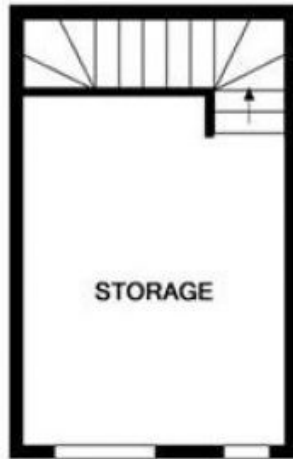


**Love Commercial**

commercial@lovere.com.au



GROUND FLOOR



1ST FLOOR



Whilst every attempt has been made to ensure the accuracy of the floor plan contained here, measurements of doors, windows, rooms and any other items are approximate and no responsibility is taken for any error, omission, or mis-statement. This plan is for illustrative purposes only and should be used as such by any prospective purchaser. The services, systems and appliances shown have not been tested and no guarantee as to their operability or efficiency can be given.