



5/282 Plenty Road Preston, VIC

## BRAND NEW SELF CONTAINED OFFICE SPACE!

- Modern office space of 90 sq. m
- Toilet & Shower
- Kitchenette
- Heating/cooling
- Data Cabling
- Additional balcony of 7 sq. m
- 1 Undercover Parking Space
- Zoned Industrial 3

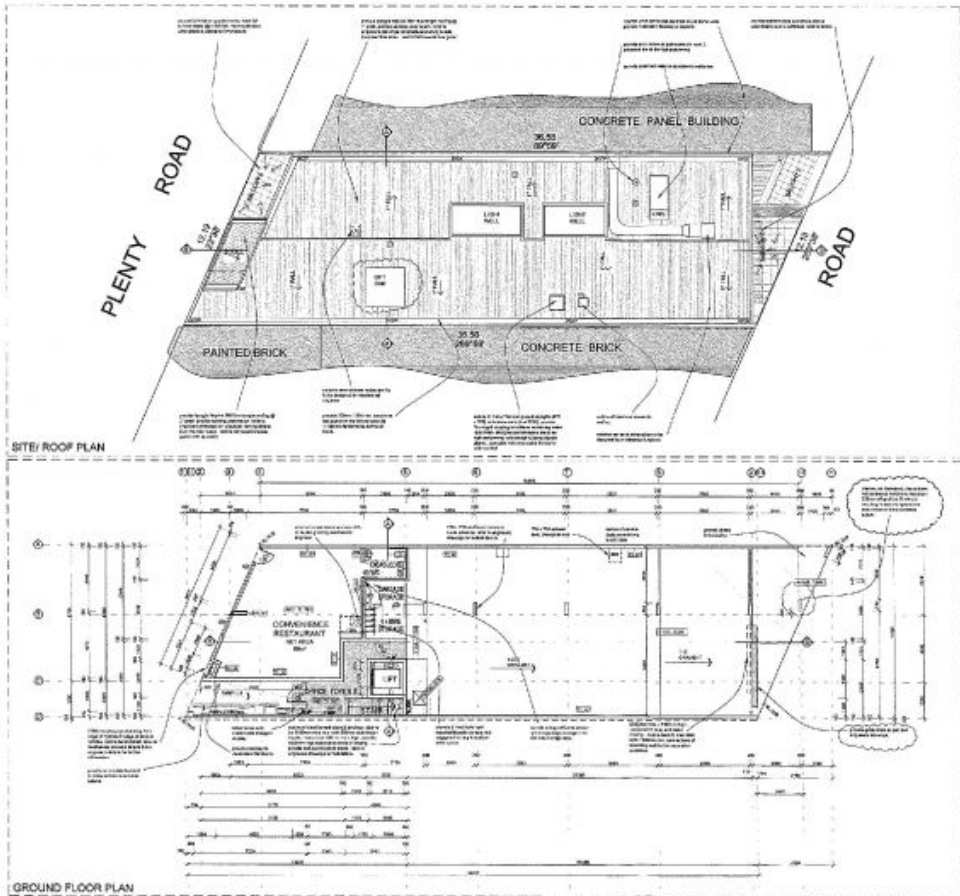
Superbly positioned on busy Plenty Road, short walk to tram and bus stop with proximity to Preston Town Centre.

Rental:  
\$14,500 p/a \$1,208.33 pcm \$278.85 p/w

LOVE & CO

**Love Commercial**

commercial@lovere.com.au



AMMENDMENTS:	
NO.	DESCRIPTION
01	AS SHOWN

WALL TYPE SCHEDULE	
WT 01	CONCRETE PANEL BUILDING
WT 02	CONCRETE BRICK
WT 03	PAINTED BRICK

BUILDING PERMIT	
PROJECT	PROPOSED OFFICE & APARTMENT DEVELOPMENT
ADDRESS	282 PLENTY ROAD, PRESTON
CLIENT	A & M ELIASE
DRAWING	SITE/ROOF PLAN GROUND FLOOR PLAN
DATE	2010
SCALE	1:100
PROJECT NO.	02/02