



35 Romano Avenue Mill Park, VIC



YOU HAD ME AT "HELLO" !!!

Looking for a bright and immaculately presented home that ticks all the right boxes.....!!!!

We'll consider the search over with this beauty on offer complete with an abundance of extras !!!

Situated within a highly sought after pocket of Mill Park and only minutes away from local shopping precincts including Westfield Plenty Valley & Stables Shopping Centre, public transport including South Morang Train Station & adjoining bus stops, local primary/secondary schools, parklands, sporting facilities including Y.M.C.A Recreational Centre, restaurant/cafes and so much more, making this a real must see property not to be missed !!!

Comprising:

Price: \$380 Per Week



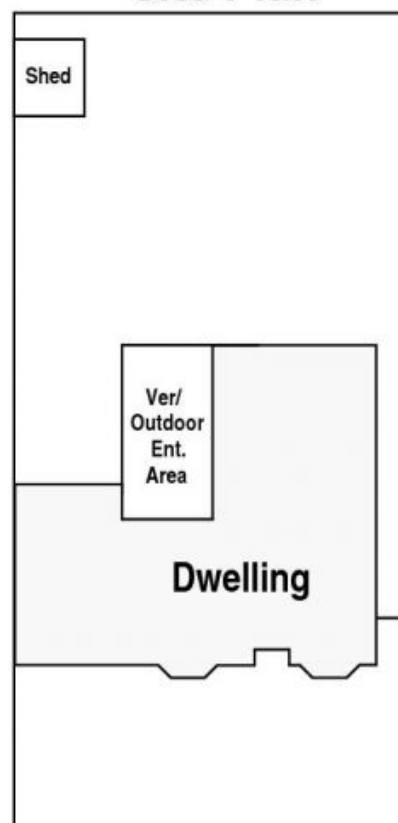
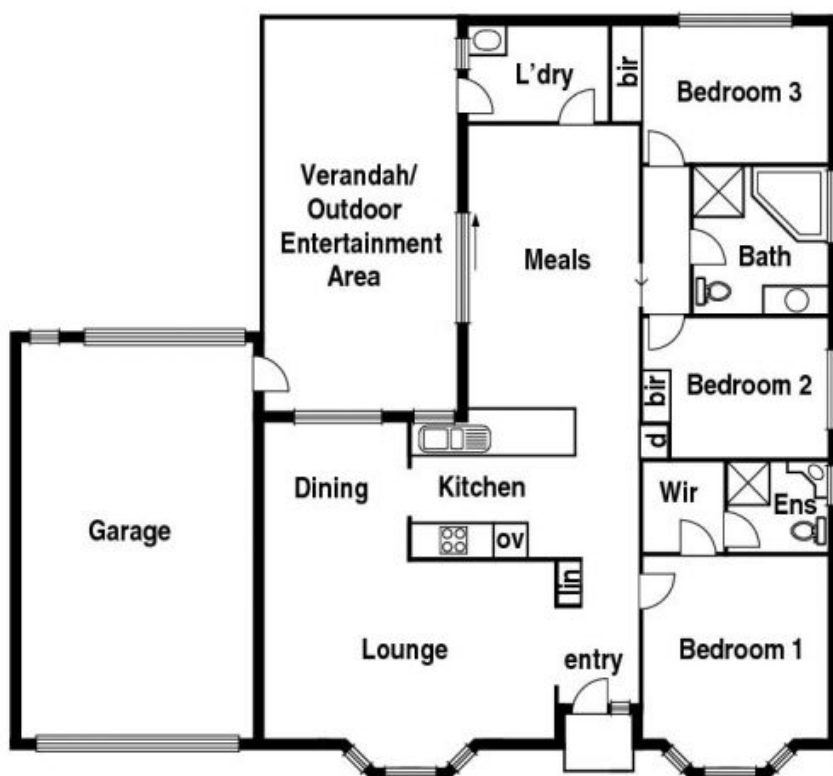
Michael Love

0400 106 577

lovemillpark@mail.inspectrealest

35 Romano Ave. Mill Park

Site Plan



LOVE & CO

The information contained herein has been obtained through sources deemed to be reliable but cannot be guaranteed as to its accuracy. Any information of special interest should be obtained through independent verification.

35 Romano Avenue Mill Park, VIC