



2 Loxton Terrace Epping, VIC



Sparkling and Stylish

Move straight in to this beautifully presented three bedroom home is situated on a lush, tree lined street, just a short stroll to Findon Road buses, Foothills Park and a short drive to Westfield Plenty Valley and South Morang Train Station.

Inside, you'll love the spacious living room with large windows allowing for lots of natural light. The huge main bedroom is delightfully presented and enjoys double built in robes and it's own access to a well-designed, easy flowing bathroom with a second entrance, a large bath and separate shower.

The modern kitchen is tiled throughout, boasts a Chef gas cooker and leads out to an immaculately presented, spacious, low maintenance courtyard. The home further indulges in a double lock up garage, an easy, free flowing design, split system air conditioning and ducted heating throughout. Suit first home buyers of astute investors.

Price: \$475000



Nick Kandi

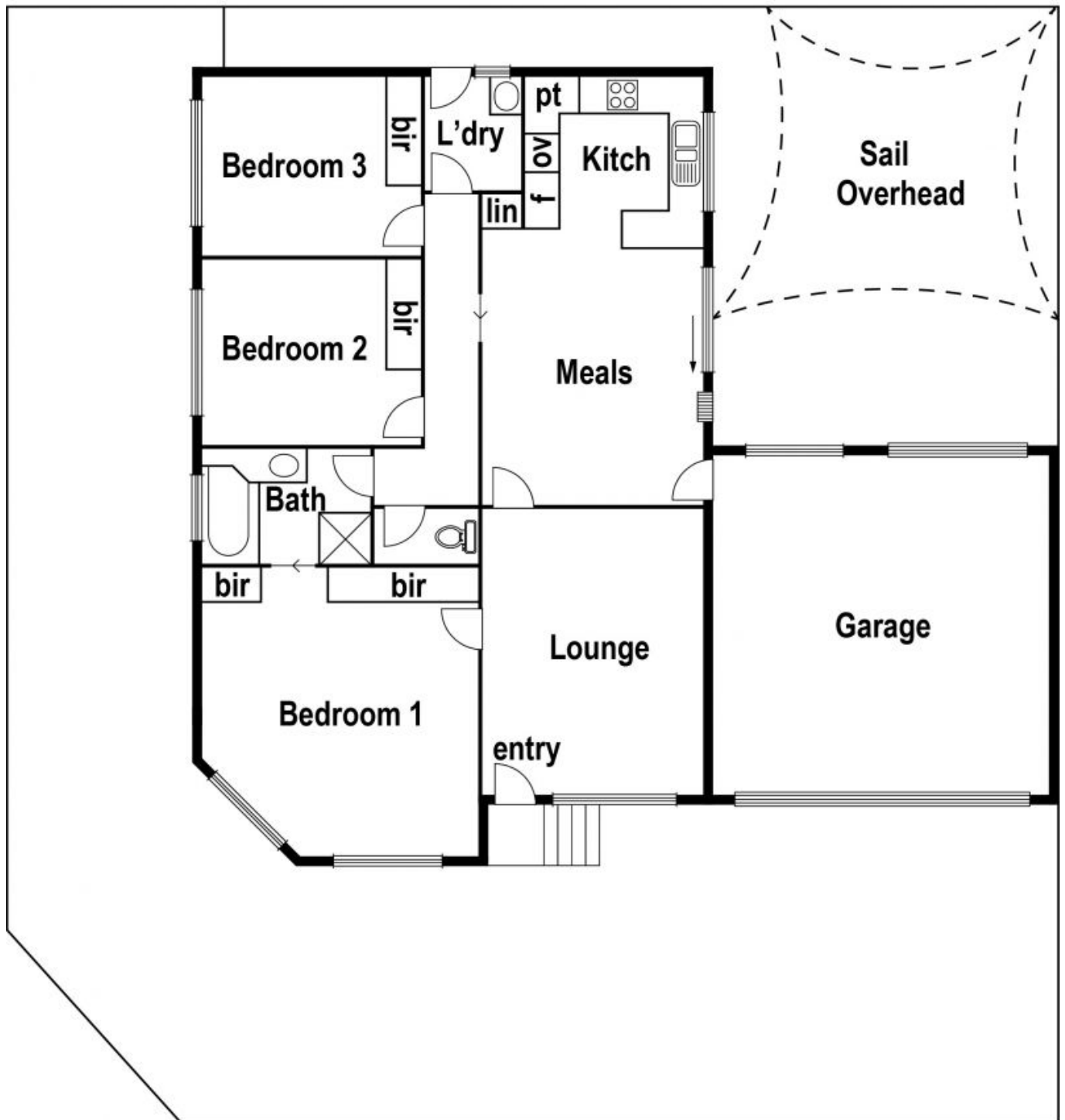
0412 310 704
nick.k@lovere.com.au



Nick Kandi

0412 310 704
nick.k@lovere.com.au

2 Loxton Tce. Epping



LOVE & CO

2 Loxton Terrace

Epping, VIC