



2/104 Derby Drive Epping, VIC



3



1



2

### Entry Level Excellence. Complete Convenience

Complete convenience and absolute affordability add to the appeal of this inviting three bedroom, entry level home in a wonderful central location.

Opposite Meadow Glen Primary and the general store, moments from the bus and acres of parklands and within a few minutes drive of Westfield and South Morang station, it's set to deliver an exceptional stress-free lifestyle for owner occupiers or tenants alike.

A generous rear courtyard combines with the meals area overlooked by the kitchen and a large living room to ensure easy indoor outdoor living. A carport to the front complements a garage to the side, there's gas heating, large bathroom, a full size laundry and scope to add value over time if desired.

Any way you look you're on a winner in the Derby

**Price:**

Set Negotiation: Mon Nov 28th  
\$300,000-\$340,000



**Nick Kandi**

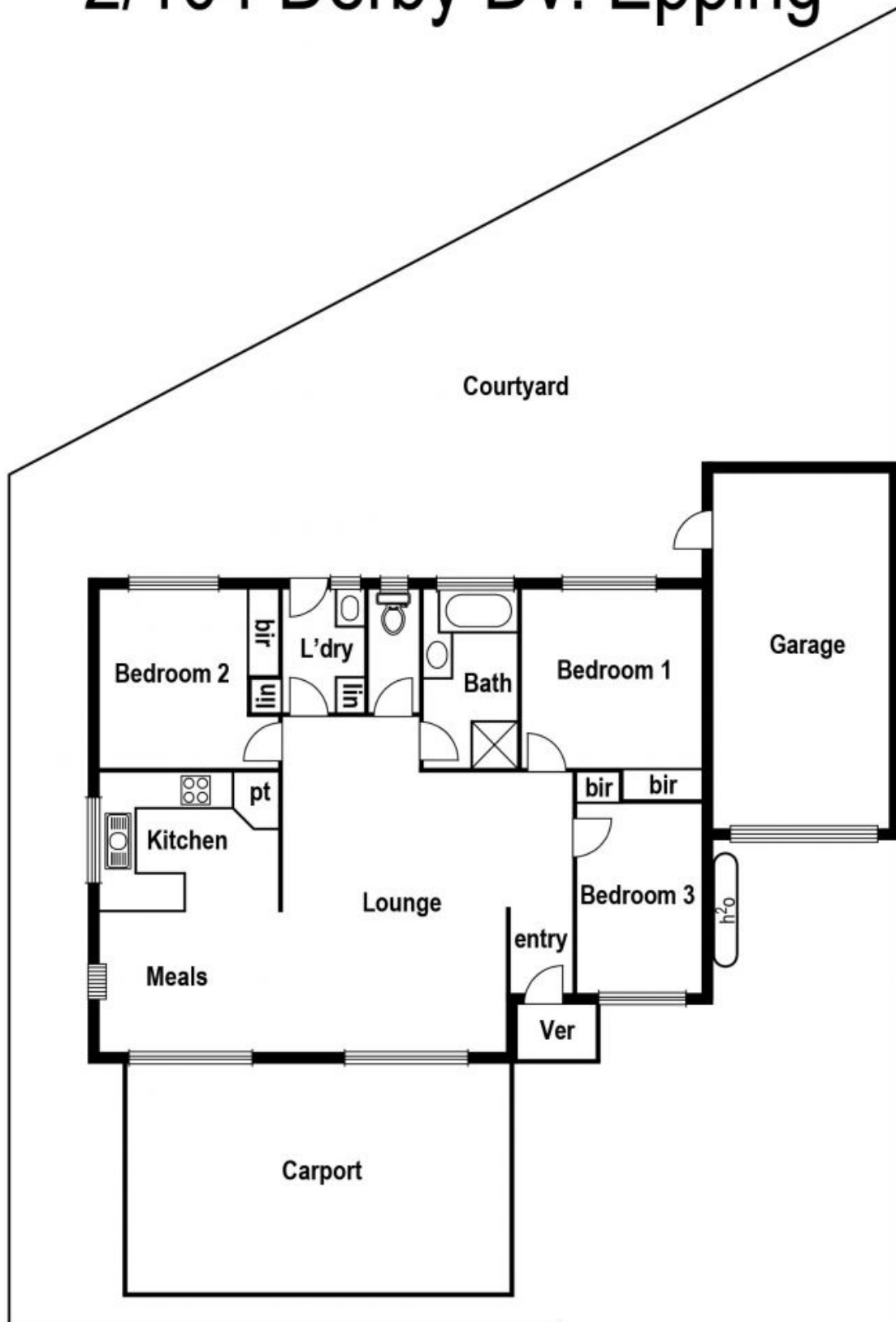
0412 310 704  
nick.k@lovere.com.au



**Nick Kandi**

0412 310 704  
nick.k@lovere.com.au

# 2/104 Derby Dv. Epping



**LOVE & CO**

2/104 Derby Drive

Epping, VIC