



3 Creek View Thomastown, VIC

4 2 2

Fabulous Living Stunning Outlook

Situated in one of Thomastown's most tightly held pockets, directly opposite acres of parklands and tracks and trails along Darebin Creek, this impressive home graced with views across the parklands to the Dandenong's delivers living enjoyed by a privileged few.

Beautifully styled, perfectly presented and brilliantly proportioned for contemporary living, the ground floor of this family oasis introduces a large study, huge formal living dining, fitted laundry, powder room and a massive open plan living area that is anchored by a stone kitchen fitted with gloss cabinetry and stainless steel appliances.

The upper level opens to a large living space with balcony access to make the most of those views, main suite with fitted walk in robe and granite ensuite, and three further bedrooms sharing a granite detailed spa bathroom.



Nick Kandi

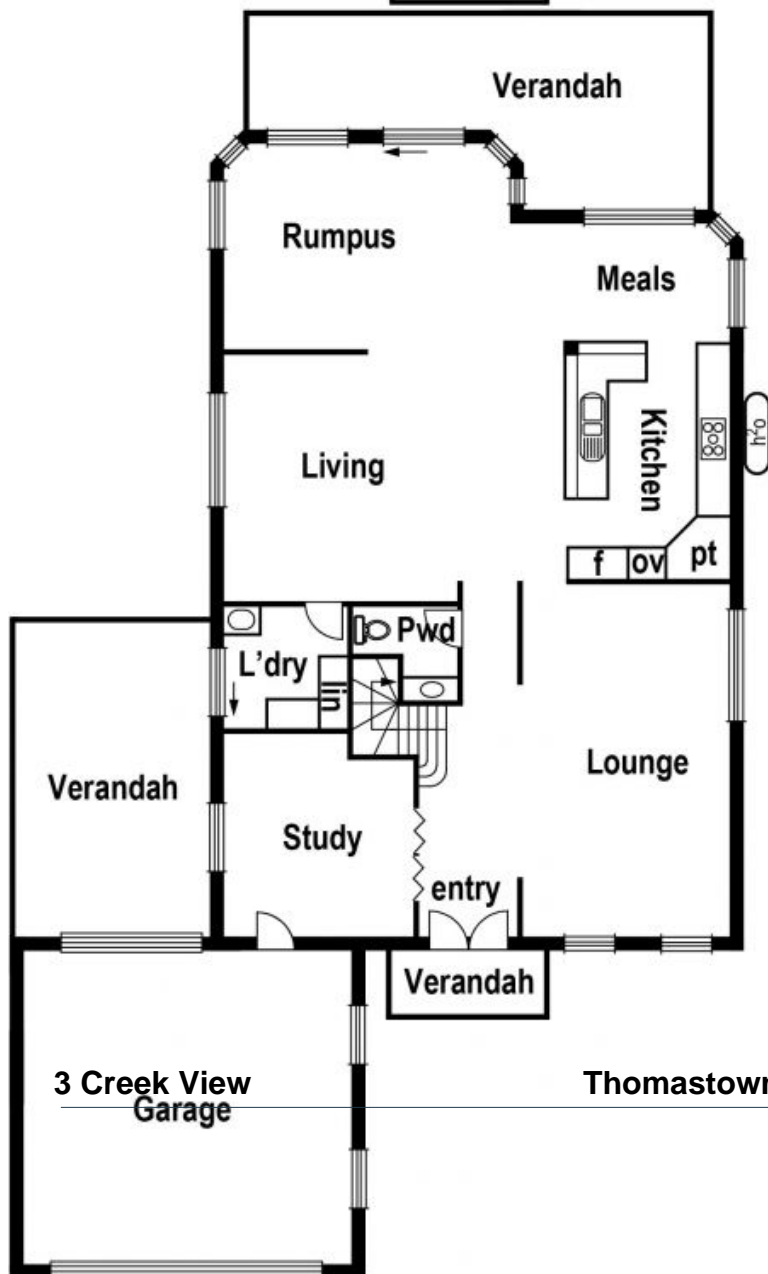
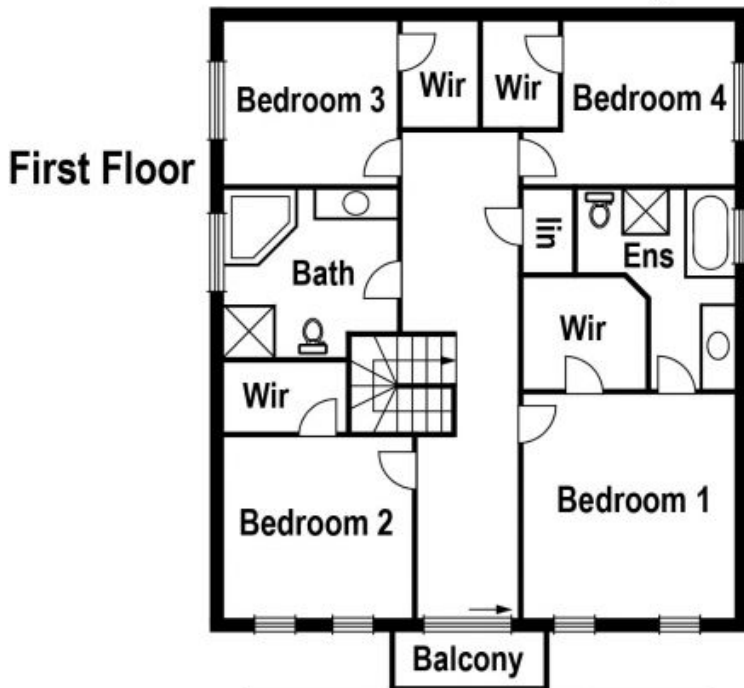
0412 310 704
nick.k@lovere.com.au



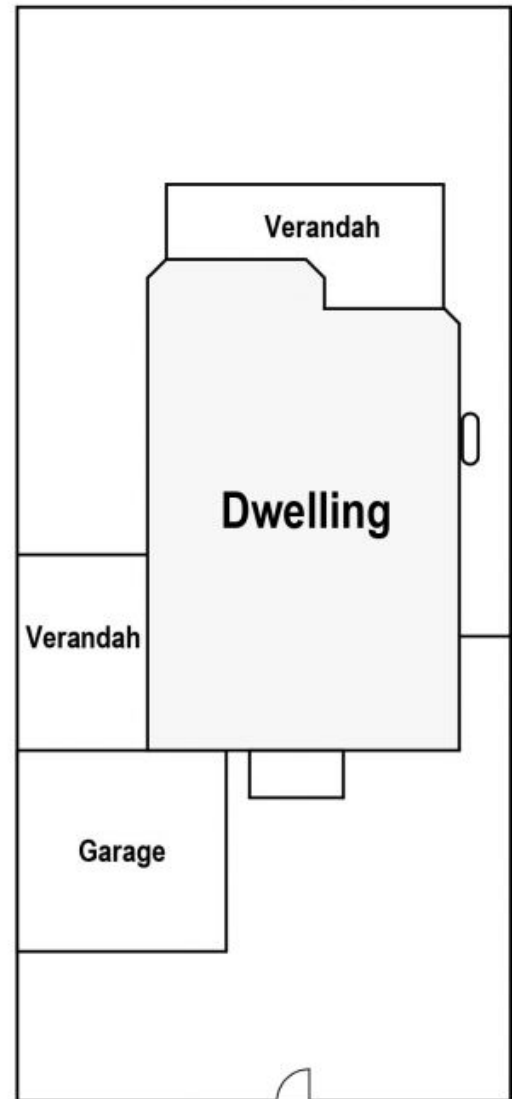
Nick Kandi

0412 310 704
nick.k@lovere.com.au

3 Creek View, Thomastown



Site Plan



LOVE & CO

Thomastown, VIC