



5 Beechwood Court Mernda, VIC

 4
  2
  2

### All The Comforts For The Growing Family

Positioned in the Woodland Waters Estate, sought after for its extensive parklands, waterways, parks and community areas graced by 300-year-old Red Gums, this beautifully appointed Simonds home will meet every family need with ease. A boardwalk entrance across landscaped gardens brings you to a double door entry that introduces exceptional, free flowing family living. The generous formal lounge complements an equally spacious casual living. Complete with entertaining unit and pushing out from a kitchen of stone and stainless steel, it steps seamlessly out to an alfresco under roof line in the fenced and gated, kid friendly yard. Four bedrooms including main with stone, dual bowled ensuite and over-sized shower provide plenty of accommodation options. With double garage featuring rear roller door, ducted heating and cooling and the economic benefits of solar hot water, it's the perfectly positioned, perfect place for you and your family!

**Price:** \$390,000

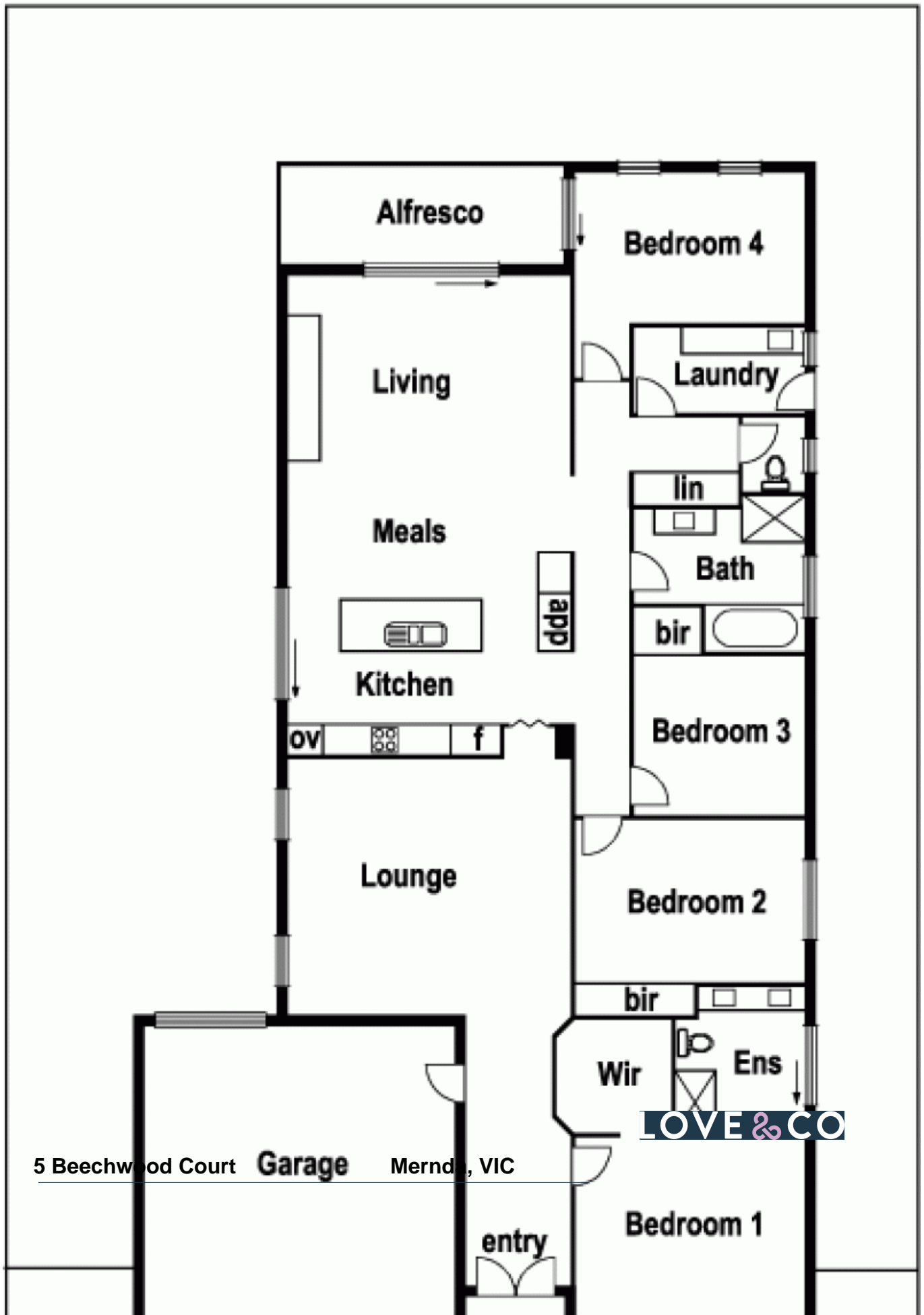


**Nick Kandi**  
0412 310 704  
nick.k@lovere.com.au



**Nick Kandi**  
0412 310 704  
nick.k@lovere.com.au

# 5 Beechwood Crt. Mernda



5 Beechwood Court **Garage** Mernda, VIC