



15 Freeman Crescent Mill Park, VIC



THE PERFECT FAMILY HOME

This well presented, clean, neat and spacious 3 bedroom home will not disappoint.

Offering the ideal location for a family or couple with the convenience of Findon Primary, The Stables Shopping Centre, public transport and more all within walking distance, it's also just minutes away from Westfield Plenty Valley and the Western Ring Road. Location really does not get any better than this.

You don't want to miss out on this one.

Comprising of:

- 3 well sized, carpeted bedrooms with built in robes
- Good sized living area

Price: \$370 Per Week



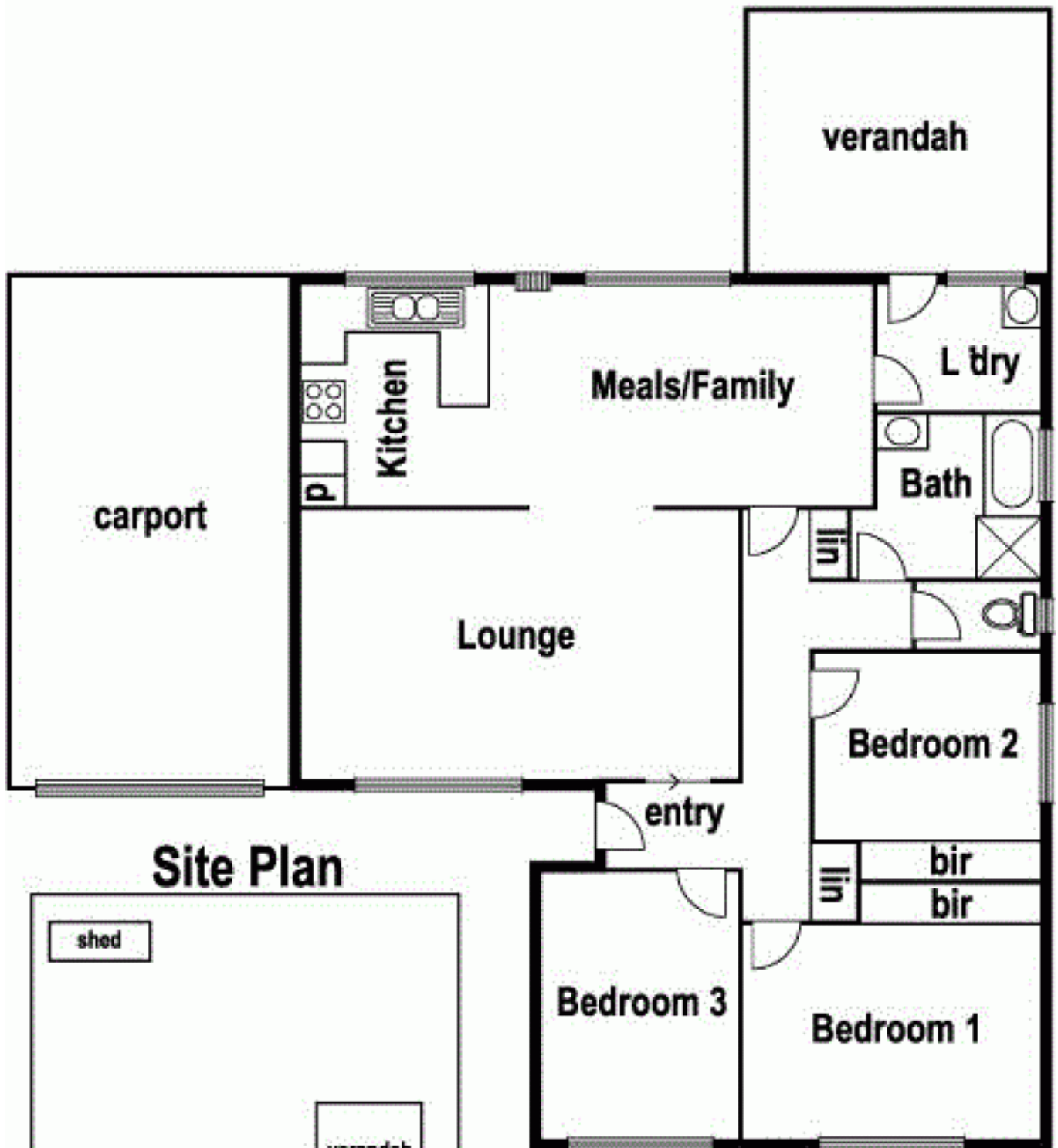
Toulou Lovett



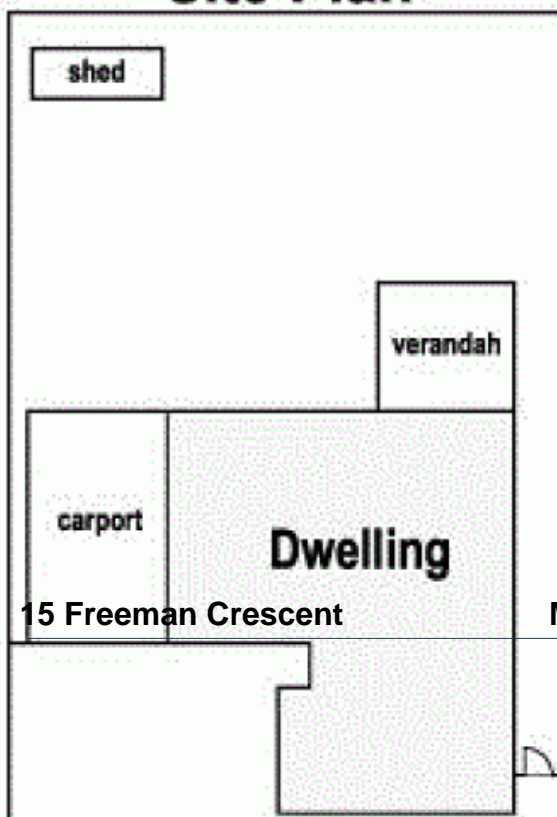
Toulou Lovett

lovemillpark@mail.inspectrealest.com.au

15 Freeman Cres. Mill Park



Site Plan



15 Freeman Crescent

Mill Park, VIC

LOVE & CO