



5 Steeple Court Epping, VIC



3



2

IDEALLY SITUATED FAMILY HOME *Insp Wed 30th Nov @ 5:00pm*

Price: \$340 per week

Conveniently located within minutes of South Morang Train Station, Westfield Shopping Centre, Meadow Glen Primary School, Parkland, Meadow Glen Athletics Reserve & much more we offer this well-kept family home ready for occupation late November.

Freshly painted throughout & offering:

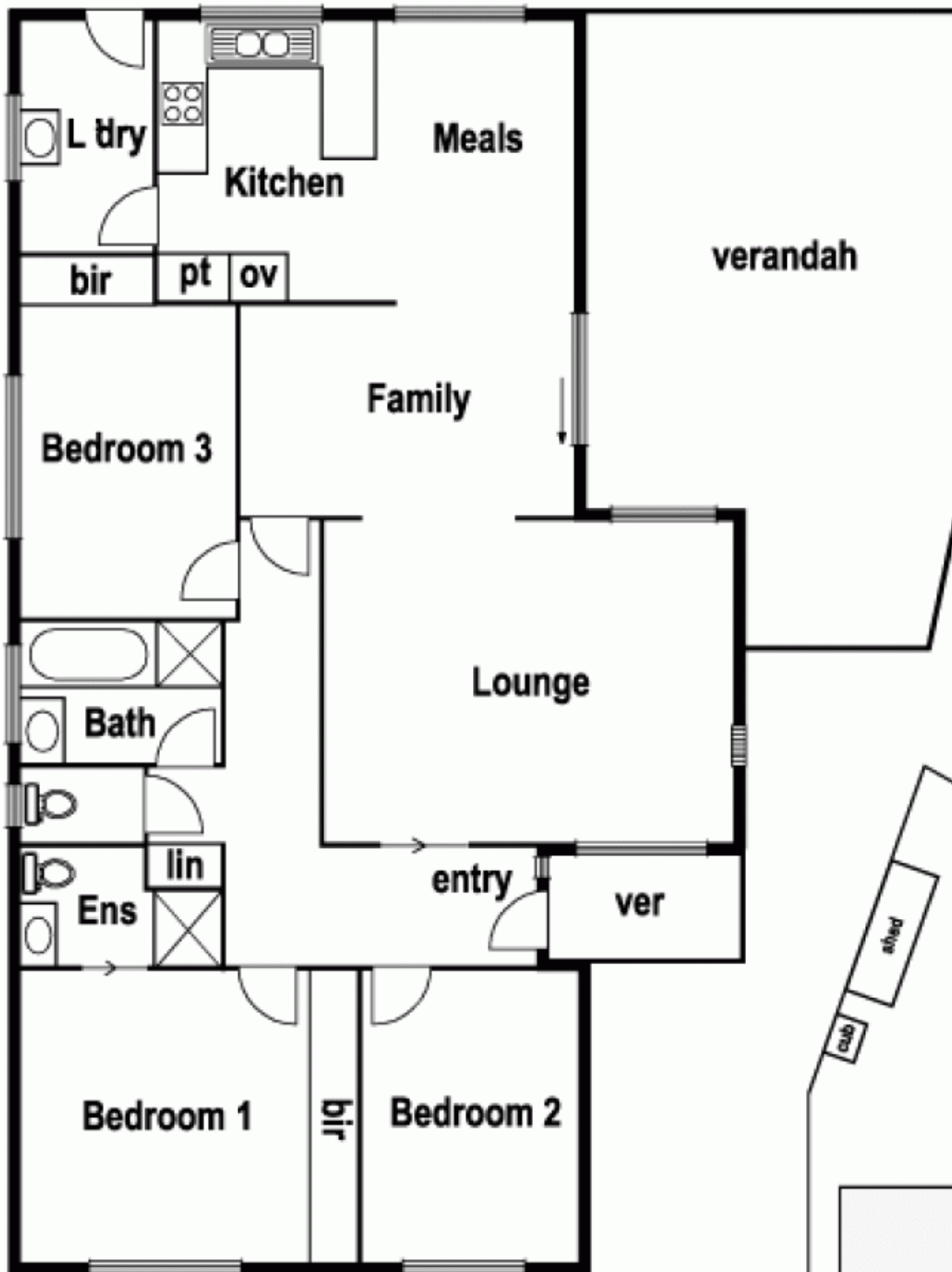
- 3 Bedrooms with built-in robes
- Ensuite to master bedroom
- Polished floor boards & tiles throughout
- Ducted heating
- Gas heater to lounge room
- Air conditioner
- Ceiling fans
- Kitchen with spacious meals area



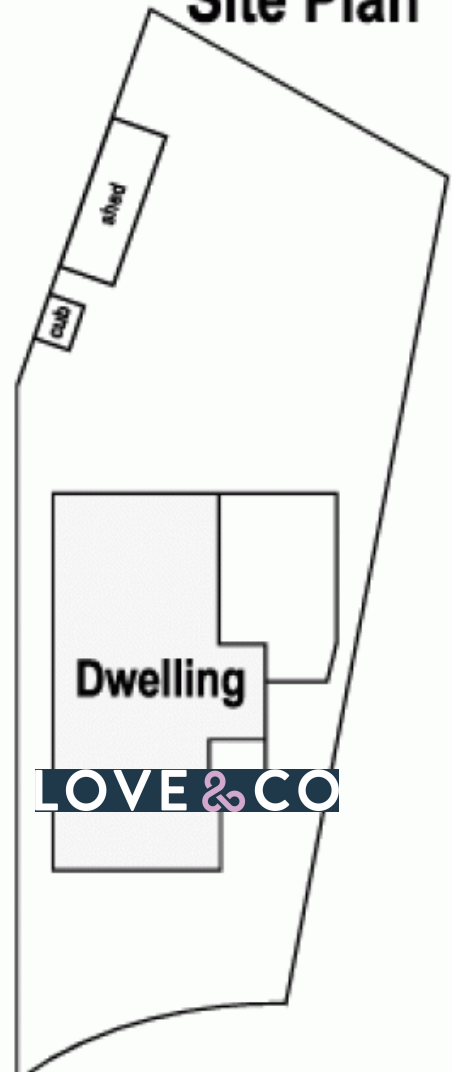
Azure Seeley

azure.s@lovere.com.au

5 Steeple Crt. Epping



Site Plan



LOVE & CO

5 Steeple Court

Epping, VIC