



3/14-16 Calendula Circuit Epping, VIC



### Affordable Appealing And So Well Positioned

Set Negotiation: Monday 9th November at 6.00pm (Unless Sold Prior)

**Price:** \$295,000

There's so much to like about this single level home in a boutique block of only four, it's hard to know where to start!

The key to its appeal is the fact that Westfield and the station along with Greenbrook Village, primary and secondary schools and a number of parks are all just an easy walk away.

Presented as well as it's positioned, it offers formal living, family meals that includes an easy to work with kitchen, family bathroom and the convenience of a separate toilet serving both bedrooms. For those that enjoy alfresco living and entertaining, there is very private low maintenance outdoor spaces that include a generous undercover area for year round enjoyment.



**Jim Kalakias**

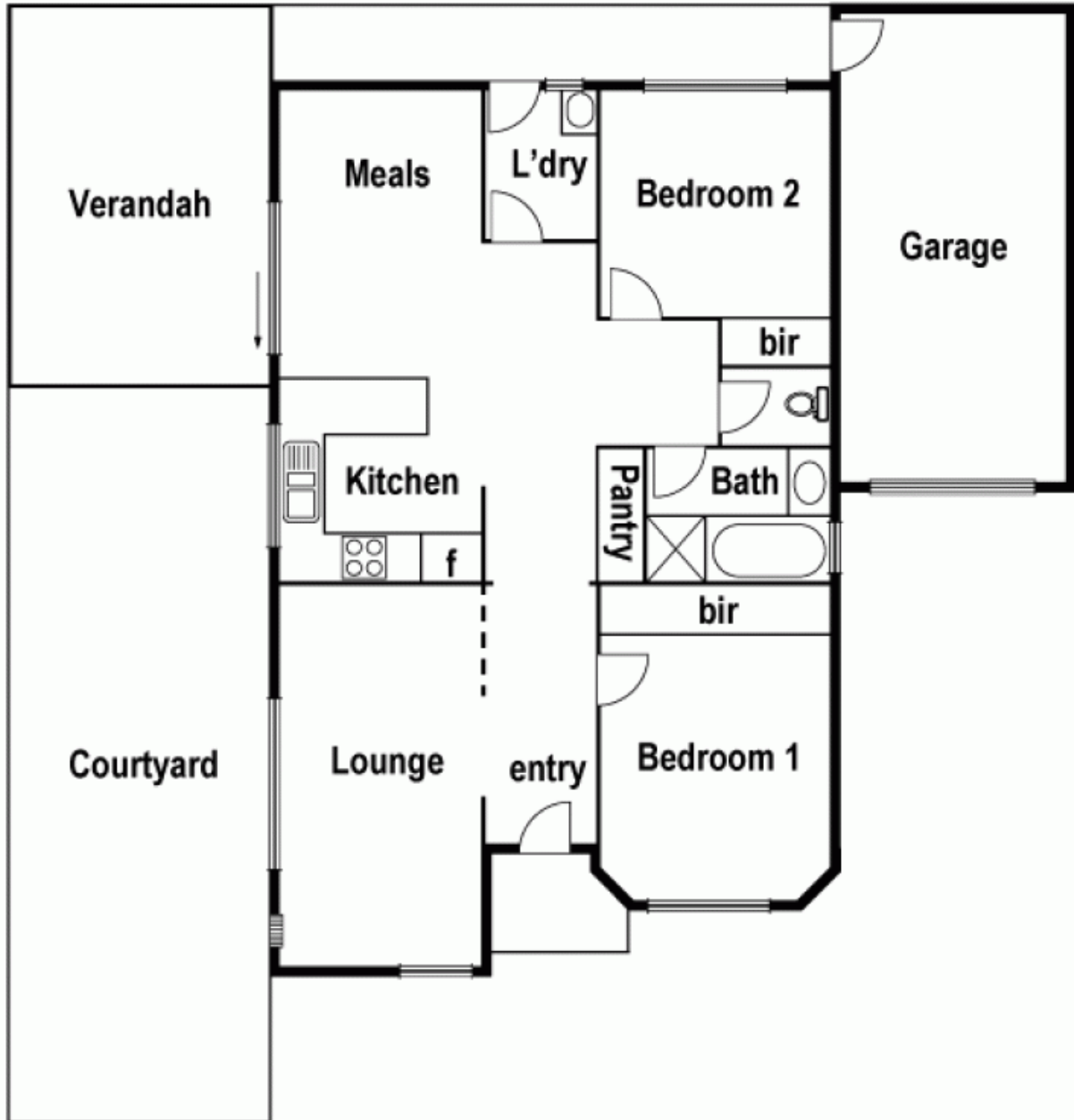
0402 177 336  
jim.k@lovere.com.au



**Bijan Rahimi**

0451 515 301  
bijan.r@lovere.com.au

# 3/14-16 Calendula Cct. Epping



**LOVE & CO**