



13 Brazil Court EPPING, VIC



3



1

## OPPORTUNITY NOT TO BE MISSED!

Recently updated and significantly enhanced by the advantage of abundant off street parking, this cosy three bedroom home appreciates a cul-de-sac setting close to bus services, schools, Westfield Plenty Valley and South Morang Railway Station.

Features include:

- Three bedrooms
- Built in robes
- Central bathroom
- Living/dining areas
- Dishwasher
- Evaporative Cooling
- Gas Heater
- Garden Shed

**Price:** \$295 per week

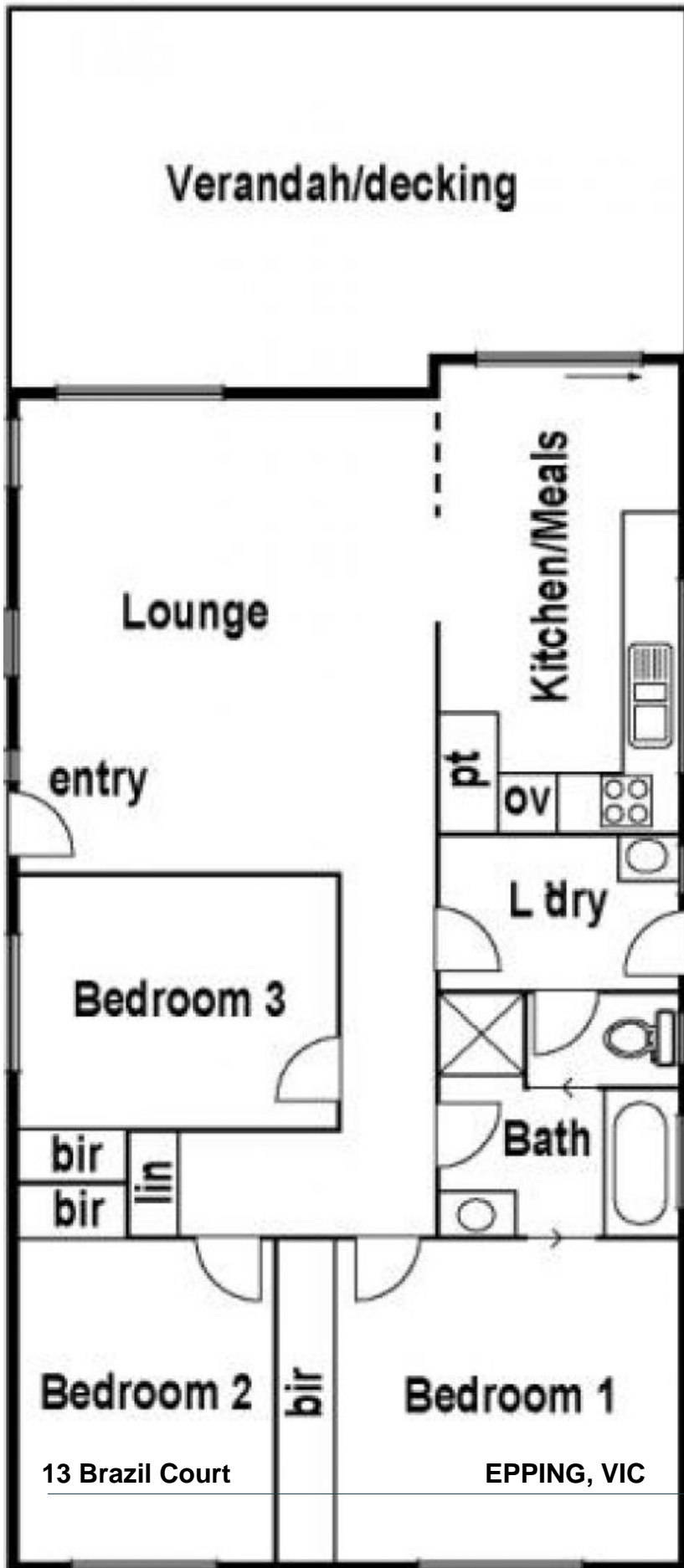


**Dimitra Kalakias**

0411 200 741

dimitra.k@lovere.com.au

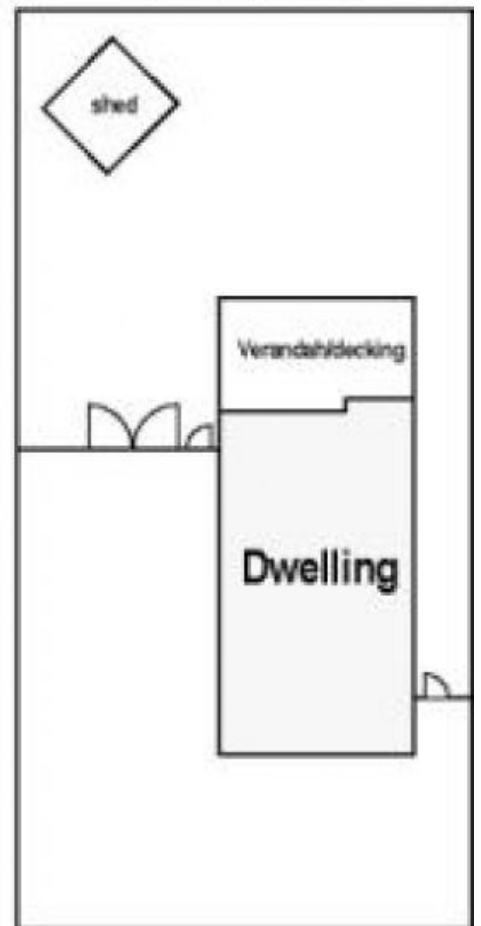
# 13 Brazil Crt. Epping



13 Brazil Court

EPPING, VIC

## Site Plan



LOVE & CO