



15 Madera Drive Thomastown, VIC

3

2

2

Large family home

Large 3 bedroom home featuring gas ducted heating, all gas appliances, ensuite to master, ceramic tiles, sparate lounge, separate dining area, outdoor entertaining area and double garage. Located in popular West Thomastown location off Victoria Drive, Thomastown, close to bus, schools and Western Ring Road.

Price: \$350 per week



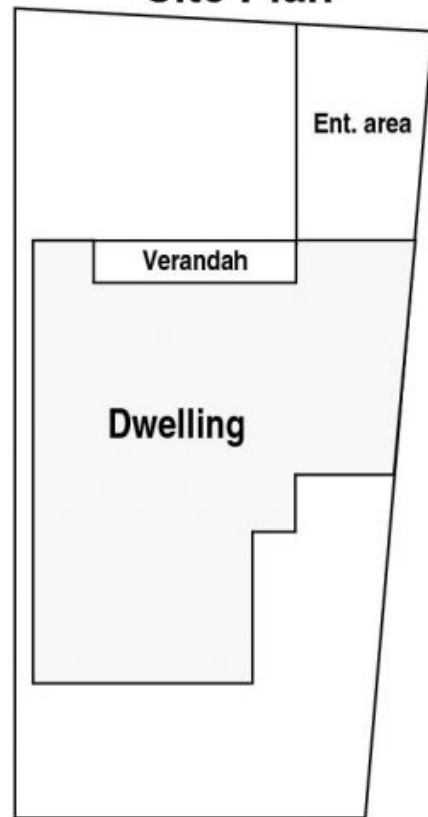
John Quinonero

john.q@lovere.com.au

15 Madera Dv. Thomastown



Site Plan



LOVE & CO