



5 Runecrest Terrace Epping, VIC



4



2



1

A LOVELY PLACE TO CALL HOME

Located in Epping's Lyndarum Estate, this near new home offers a spacious and relaxed family-friendly lifestyle in one of the area's favourite neighbourhoods. Expansive floor plan features four generous bedrooms with Built in robes, Master with Walk in robe and ensuite, separate lounge, large family/meals area, and centrally appointed kitchen with stainless steel appliances. Complete with Ducted heating, single car garage with internal access, Under cover entertainment area and low maintenance rear yard. Situated within walking distance to schools, Shops, local parks and transport (Buses) Inspection is a must!

LOVE REAL ESTATE - NO 1 FOR PROPERTY MANAGEMENT

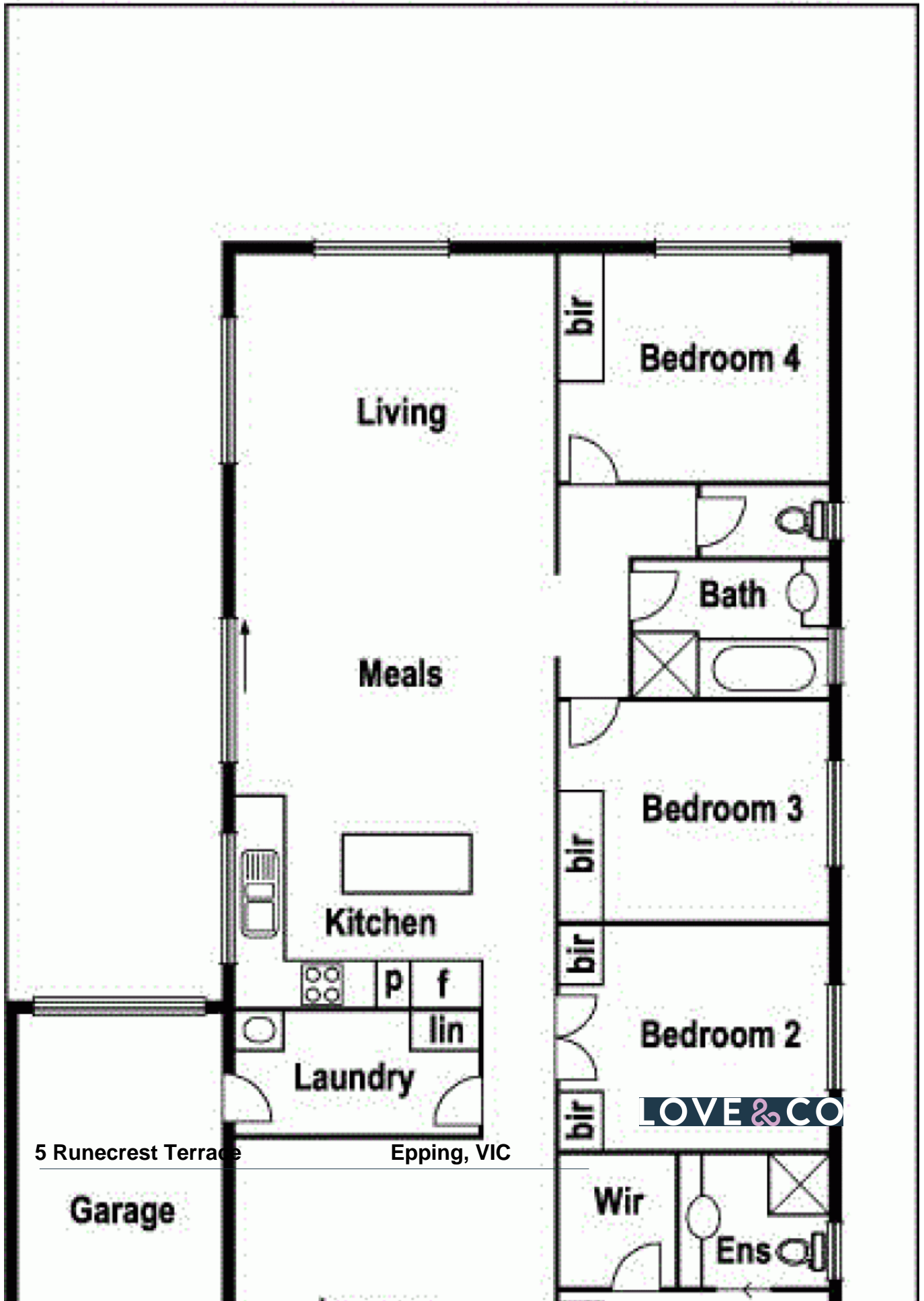
Price: \$420 per week



Michael Cummaudo

ire.preston@lovere.com.au

5 Runecrest Tce. Epping



5 Runecrest Terrace

Epping, VIC

LOVE & CO

Garage

Living

Meals

Kitchen

Laundry

Bedroom 4

Bedroom 3

Bedroom 2

Bath

Wir

Ens

bir

bir

bir

bir

p

f

lin