



7 Margaret Grove Preston, VIC



SPACIOUS FIVE BEDROOM FAMILY HOME- UNDER OFFER

Larger than it looks and in a prime location homes like this are hard to find.

Generous interior includes five bedrooms, or 4 plus 2 living areas, master bedroom with ensuite(spacious) and walk in robe, two further bathrooms, updated kitchen/meals, living area and separate lounge, large laundry, ducted heating/cooling, plus an expansive rear yard with rumpus/studio (converted garage) and amazing city views. Close to Plenty Road tram, local schools, High Street cafes and Preston Market. Land size 650m2 (approx.) and with a wide side drive creates an opportunity to build a unit in the back (STCA)

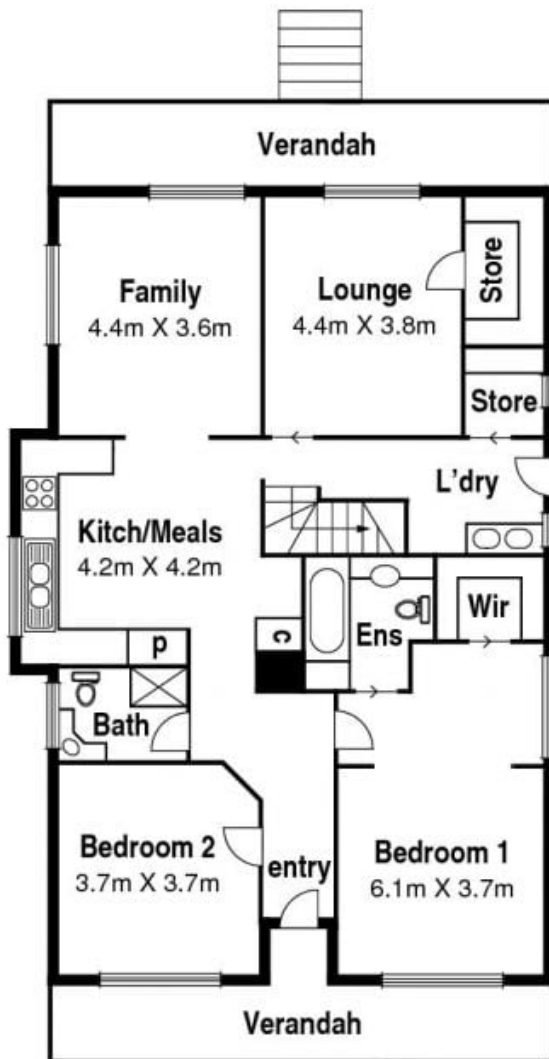
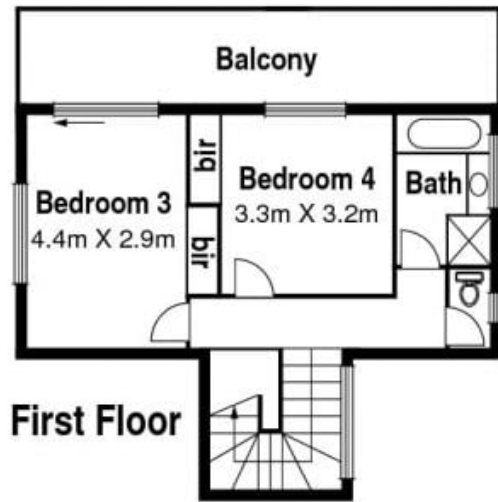
Due diligence checklist - for home and residential property buyers
<http://www.consumer.vic.gov.au/duediligencechecklist>



Love Preston

preston@lovere.com.au

7 Margaret Gv. Preston.



Site Plan

