



25 Clifton Grove Preston, VIC

4 bedrooms, 1 bathroom, 2 cars

First Class Location on a Corner Block

Wonderful location in the centre of Preston, this imposing late-Victorian is just a hundred metres to High Street shops and caf?s, and within easy reach of Preston Market, schools, Bell Station and Plenty Road tram.

Classic elegance both inside and out, it delivers a superior family living environment thanks to a flexible floor plan introducing spacious living meals, equally generous refined formal lounge and four bedrooms served by a marble finished bathroom, all opening from a grand central hallway with dramatic archway.

Leadlight windows, four open fireplaces, high ceilings, decorative cornice and Baltic pine floorboards adds to the already immense appeal with a deep rear yard.

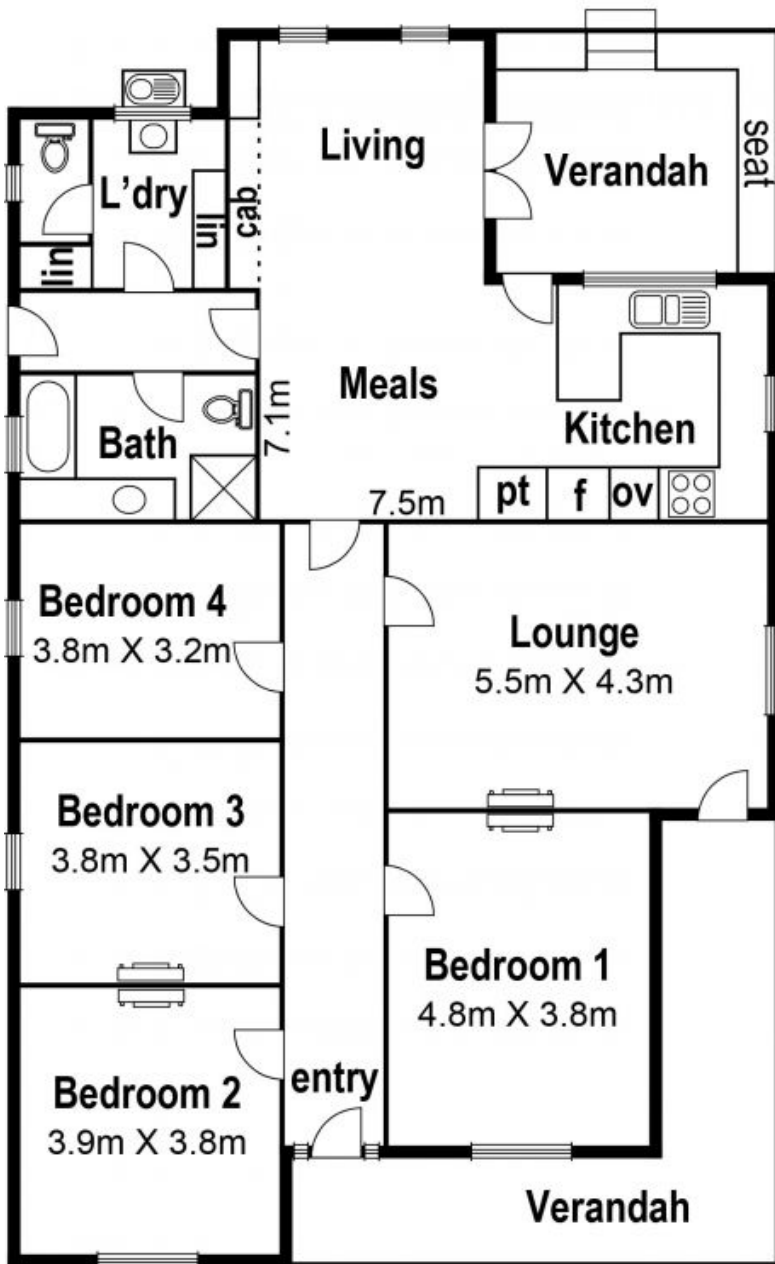
Price: \$1,731,000



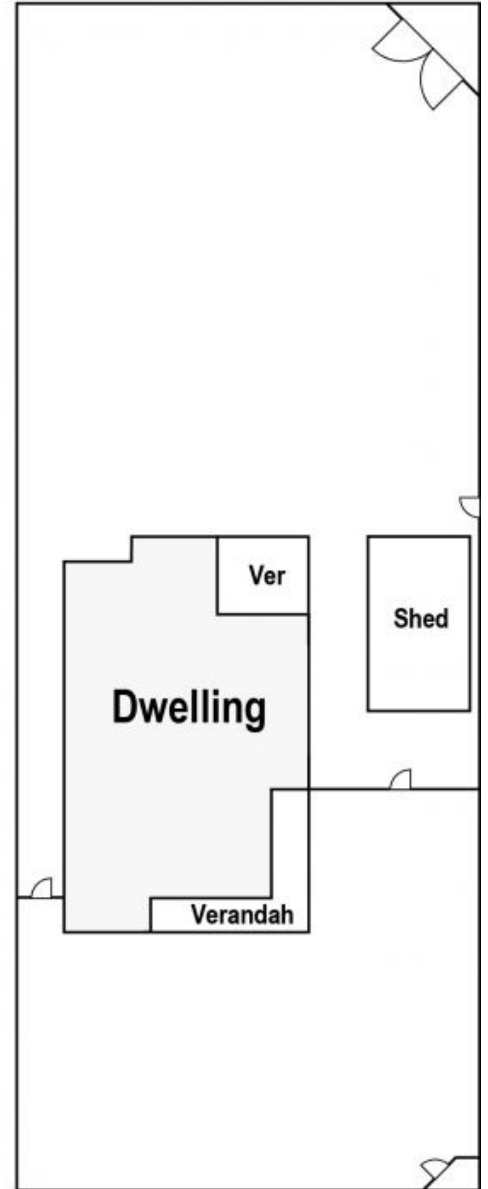
Love Preston

preston@lovere.com.au

25 Clifton Gve. Preston



Site Plan



LOVE & CO