



22 Alexander Avenue Thomastown, VIC

 2
  1
  1

Brilliant Opportunity In A Great Location

This brick home on a deep allotment, just 250 metres from the station, and not much further to all the benefits of High Street, represents a superb opportunity to enjoy all this rapidly evolving area has to offer.

Currently improved by an original home that introduces a spacious living room, eat in kitchen, two bedrooms and the family bathroom; it's a brilliant combination of position, proportions and potential.

Move in and enjoy as is while making plans for a contemporary update or extension to bring it forward to today. (stca)

Alternatively astute buyers may wish to start again with a new home site (stca) while others will make the most of that deep allotment and fabulous location and consider subdivision or re-development. (stca)

Price: \$425,000

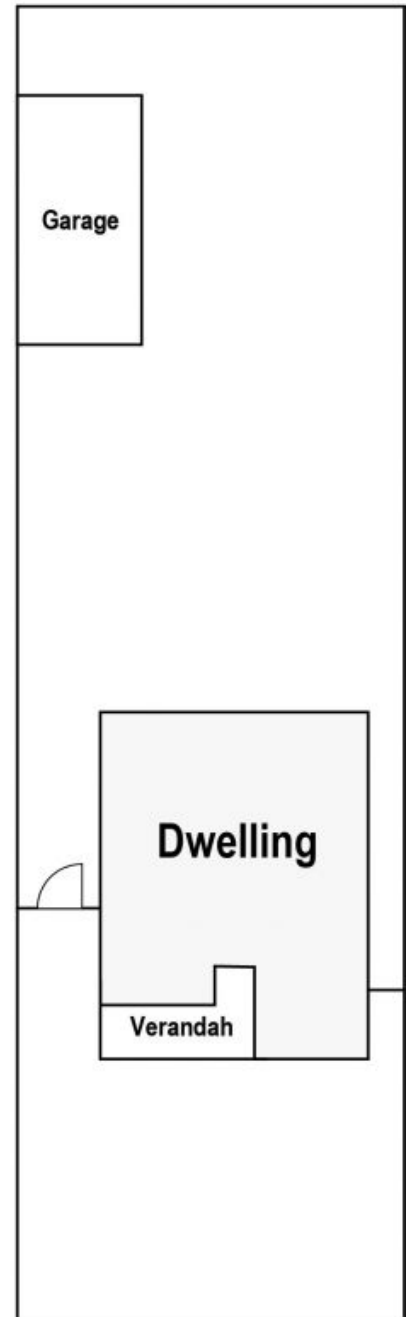
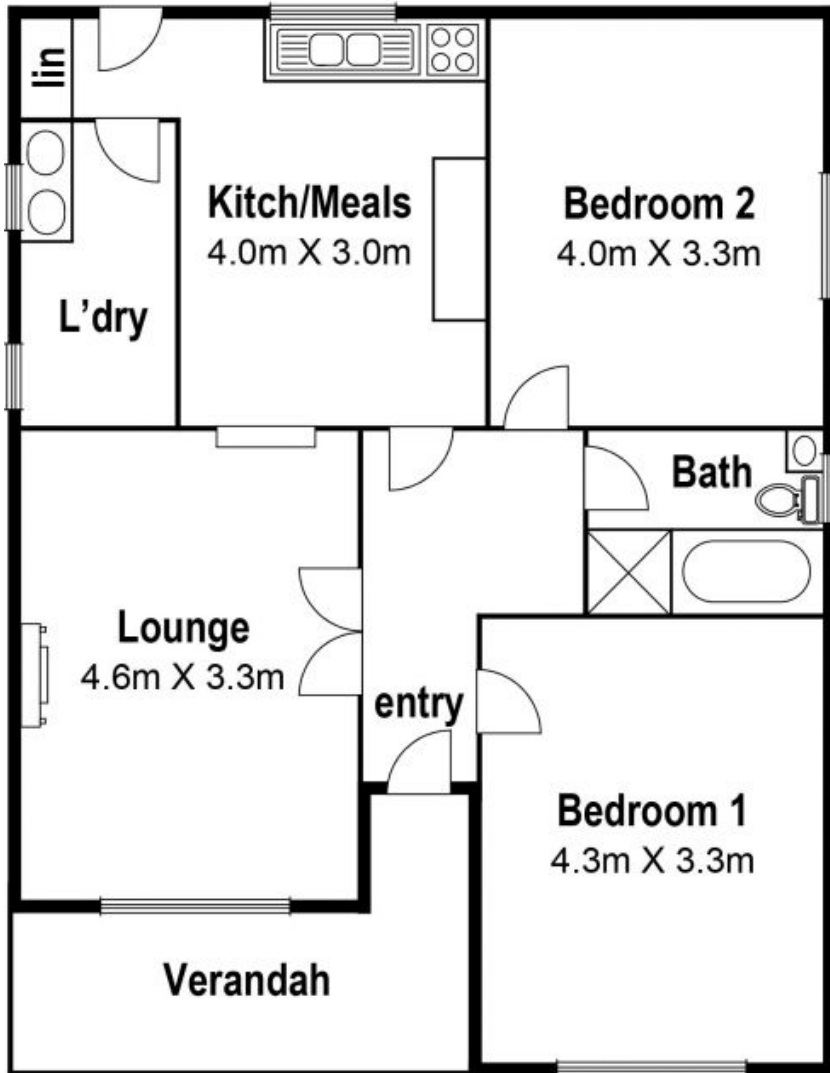


Love Preston

preston@lovere.com.au

22 Alexander Ave. Thomastown

Site Plan



LOVE & CO