



4/23-25 McEwan Road Heidelberg, VIC



2



1



1

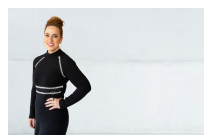
## EASY LIVING

Simply stunning a delightful sleek dynamic building that stuns the eye. This townhouse is located just minutes from shops, bus and easy access of Northland, Heidelberg & Rosanna Village. The brilliant design combines functional yet flexible floor plan and features two bedrooms with built in robes, a stunning open plan kitchen showcasing quality stainless steel appliances including dishwasher, modern bathroom, laundry, off street parking and split system heating and cooling unit.

LOVE REAL ESTATE - NO 1 FOR PROPERTY MANAGEMENT

**\*\*INSPECTION BY APPOINTMENT ONLY - REGISTER YOUR INTEREST\*\*** Please note that all inspection times are subject to change.

**Price:** \$320 - \$355 per week



**Niki Castro**

0414 334 900

lovecopreston@mail.inspectreale