



17 Ethel Grove Reservoir, VIC



Grand Living In The Heart Of The Oakhill Estate

When it comes to delivering spaces relevant to this century, behind a timeless facade from the last....this three bedroom, two bathroom home sets the standard.

It's very rare to find a period home so comprehensively renovated with out losing its character and charm in a mismatch of the classic and the contemporary.

Stunning original Baltic pine floorboards, picture and plate rails, leadlight windows, ceiling roses and traditional light fittings, decorative cornices, and timber paneling in the entry hall sit comfortably with multiple climate control units, ducted heating all adding to the allure of a family friendly floorplan.

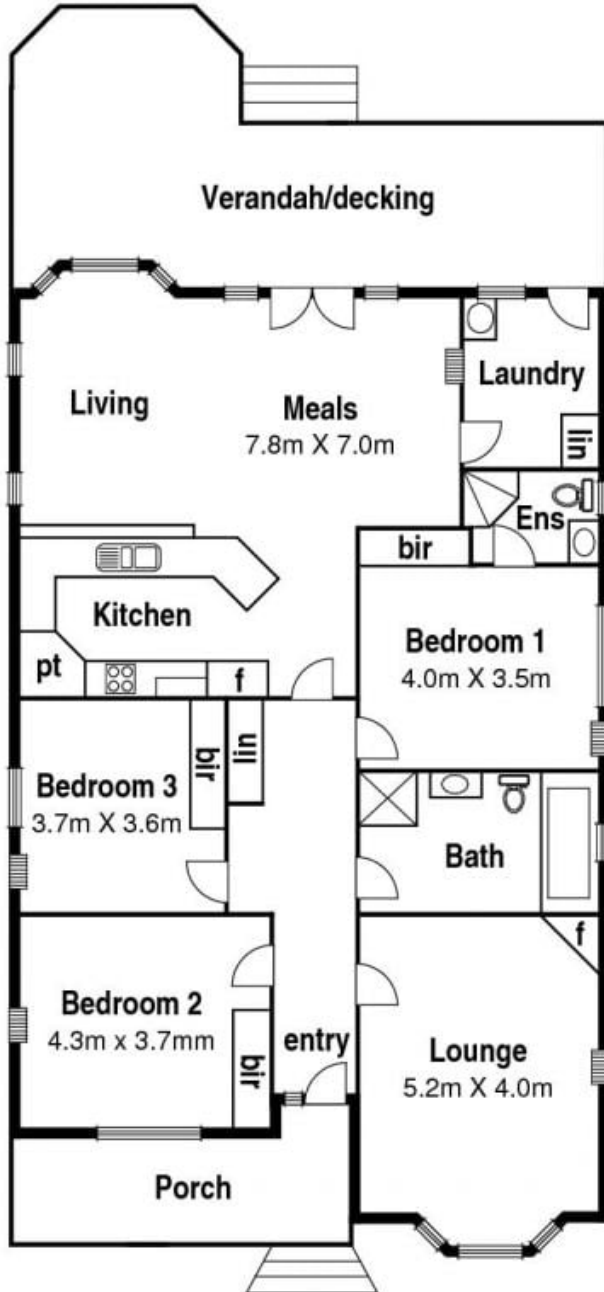
Re-stumped, re-plastered, re-wired and re-roofed, a formal living room with fireplace and bay window is a refined partner to a casual living zone anchored by a Jarrah kitchen. An expansive decked alfresco provides summer entertainment options, while the large lawn ensures the kids have plenty of space to let off steam. Close to tram, shops, train and cafes.



Love Preston

preston@lovere.com.au

17 Ethel Gv. Reservoir



Site Plan

