



30a Raymond Street Preston, VIC

 3

 1

 2

Charming, Captivating And Close To It All

This inviting Period home on a wonderfully generous 380 m2 enjoys a fantastic location just 700 metres from the tram on Nicholson Street, 500 from local shops and closer still to the bus, parklands and bike and walking paths along the Merri Creek. A super starter family home, baltic pine floors, cornice, ornate lead light windows and picture rails adorn an interior that offers spacious formal living, updated kitchen with walk in pantry and breakfast bench, family meals area and three bedroom served by a central bathroom. The north facing rear yard with its sun soaked entertainment zone and established gardens, a full side driveway and carport with roller doors front and rear and is ready to do double duty as an extra under cover area if required.

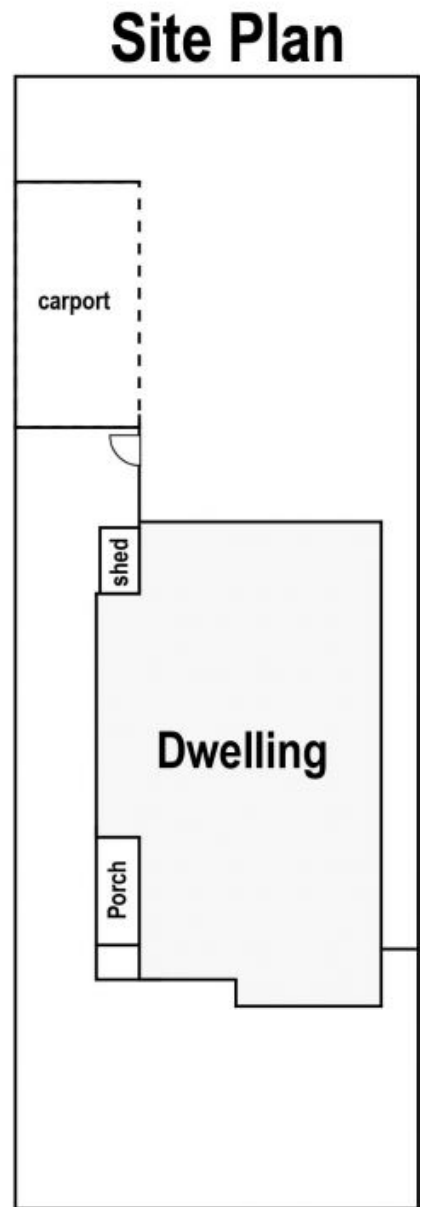
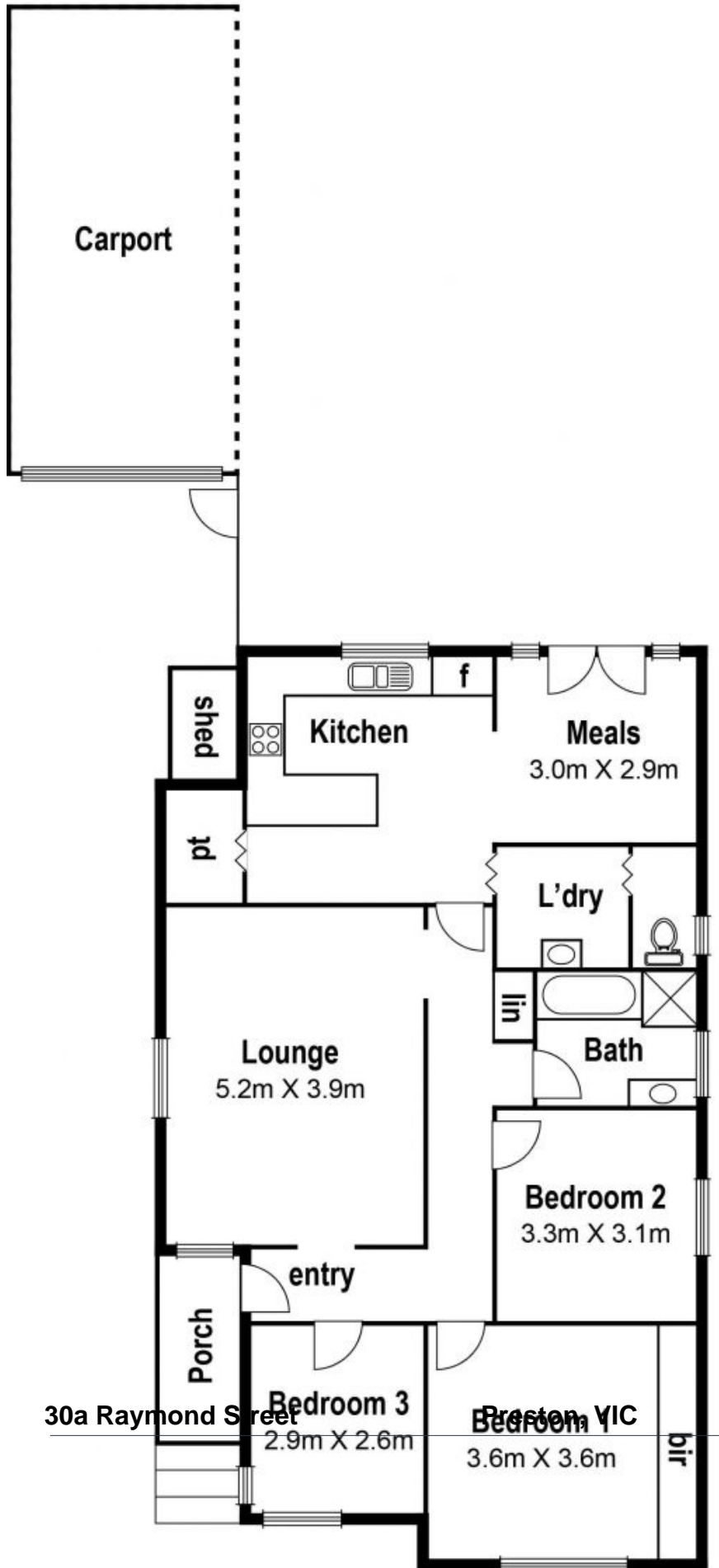
Price: Sold for \$690,000



Love Preston

preston@lovere.com.au

30A Raymond St. Preston



30a Raymond Street

Preston VIC

LOVE & CO