



15 Railway Place PRESTON, VIC

3

1

1

Todays Appeal Tomorrow's Options.

This original home boasting close proximity to the station, parks and tram and shops of High Street, and Plenty and St Georges Roads, along with a wide ROW create a great opportunity for a renovation, redevelopment or new home site (all stca). Current day spaces including generous living, a bright kitchen and adjacent meals, three bedrooms and a family bathroom will provide easy comfortable living or deliver rental income while you decide how best to take advantage of the proportions, position and potential on offer.

Agent: Love Real Estate Preston

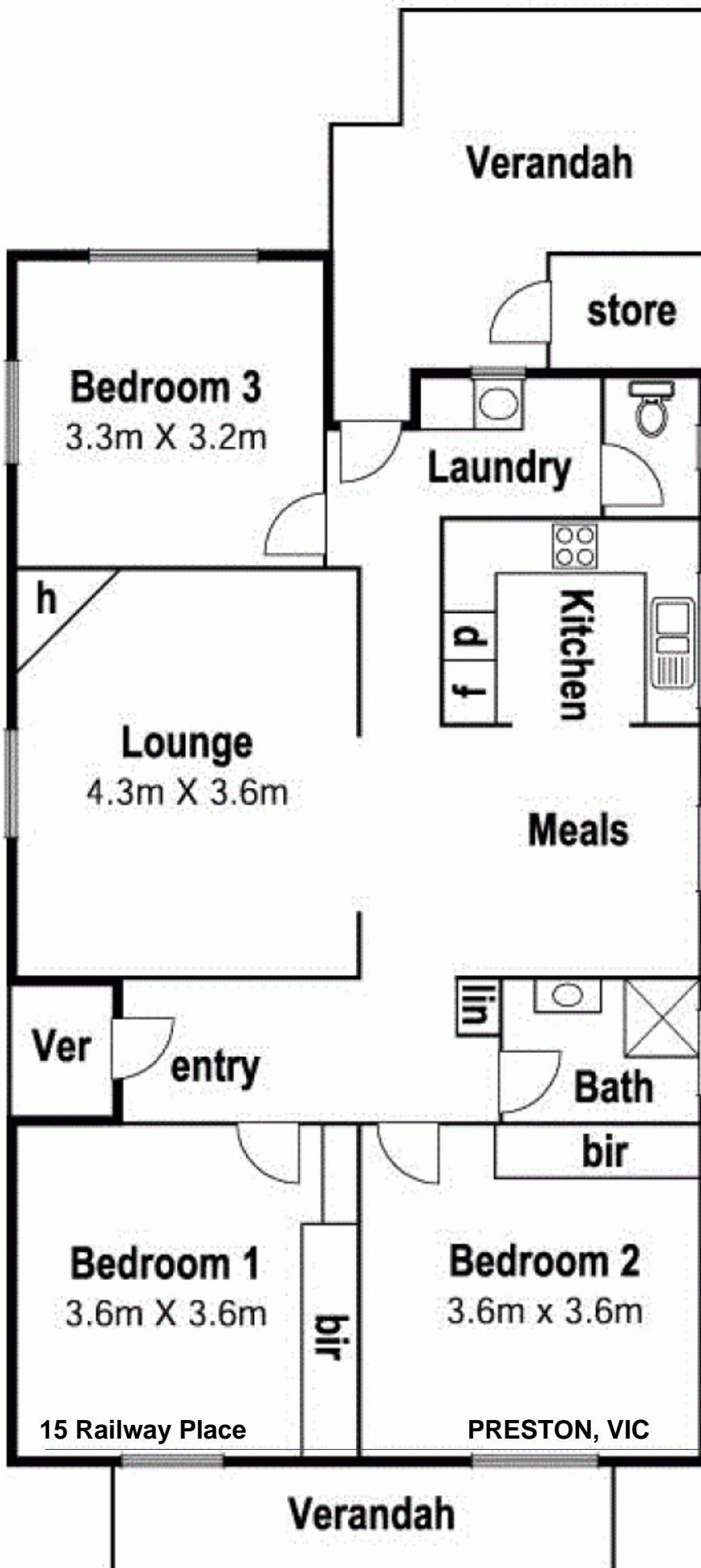
Price: Sold for \$580,000



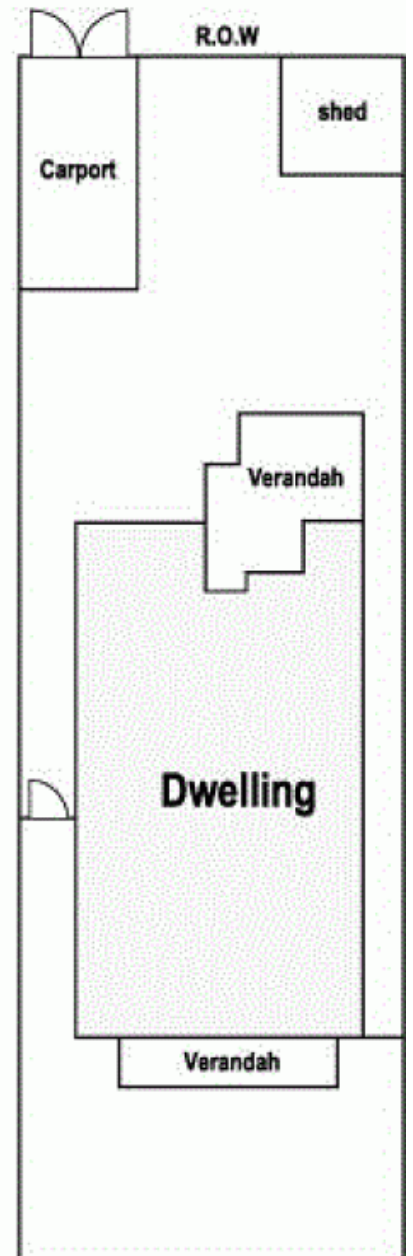
Love Preston

preston@lovere.com.au

15 Railway Pl. Preston



Site Plan



LOVE & CO