



492 Murray Road PRESTON, VIC



**LAND & LOCATION**

Absolute prime location in the heart of Preston West just a short stroll to trains, trams, schools, shops & market. Set on 590.3m2 approx this timber home in need of full renovation may also suit development STCA. Offers invited!

For further information contact Noel Crouch 0412 207 117, email [noel.crouch@loverealestate.com.au](mailto:noel.crouch@loverealestate.com.au) , Ken Gu 0433 428 060 email [ken.gu@loverealestate.com.au](mailto:ken.gu@loverealestate.com.au)

Agent: Love Real Estate Preston

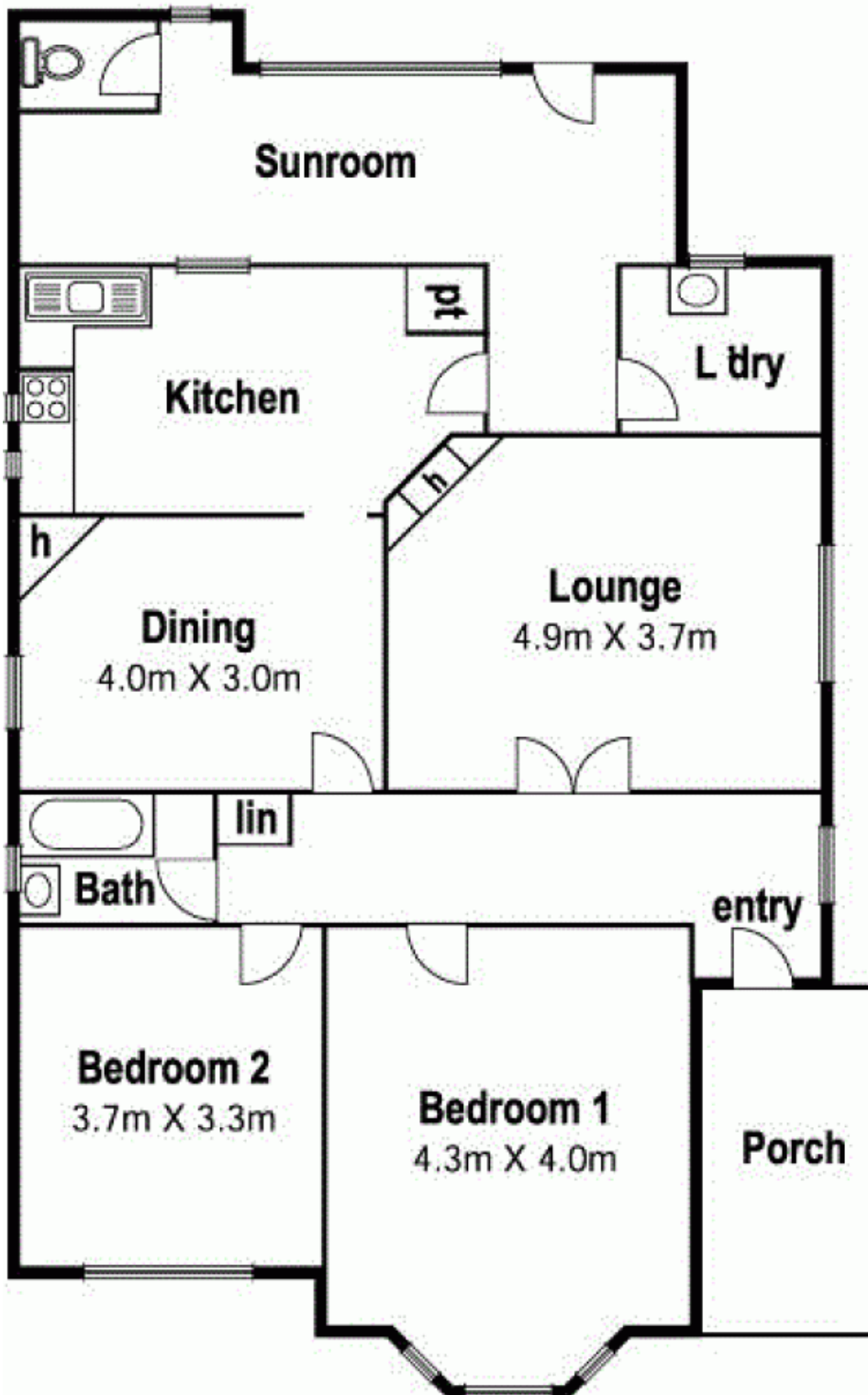


**Ken Gu**  
0433 428 060  
[ken.g@lovere.com.au](mailto:ken.g@lovere.com.au)

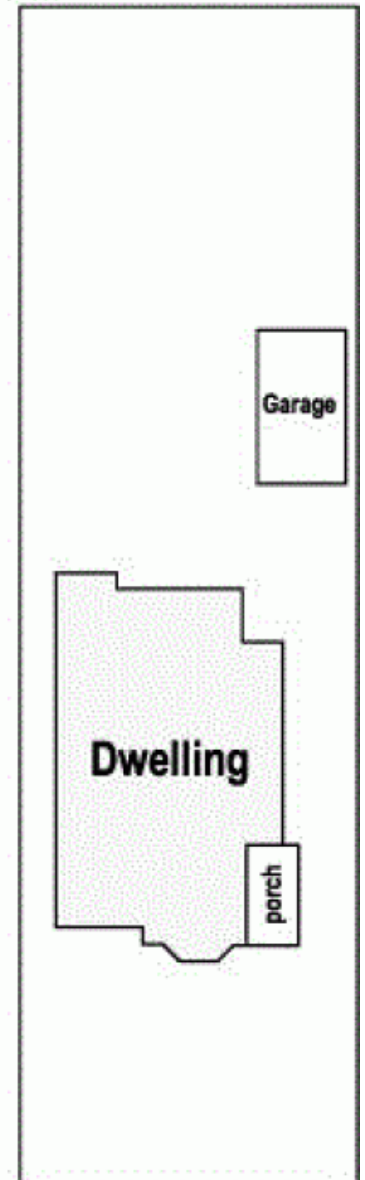


**Noel Crouch**  
0412 207 117  
[noel.c@lovere.com.au](mailto:noel.c@lovere.com.au)

# 492 Murray Rd. Preston



## Site Plan



LOVE & CO