



10 Essex Court Heidelberg, VIC

3

2

4

Serene and Tranquil!

Be blown over by this renovated home located in a quiet court location yet still close to all amenities. Surrounded by parklands and walking tracks, this 3 bedroom home is light filled due to the large windows providing natural sunlight. A hostess kitchen meals area is complemented with modern appliances including dishwasher, lots of cupboard and pantry space. The lounge has an open fire place and double opening doors to gardens. A central bathroom also has separate bath. Features include ceiling fans, polished floors throughout, ducted heating and an outside decked balcony overlooking Banyule Reserve. Minutes to Warringal Shopping Plaza, Banyule Primary School, Mercy College, Austin & Mercy hospitals.

***HOW TO VIEW THIS PROPERTY**

All attendees MUST register. Please refer to the instructions below to register your attendance online.

Price: \$450-\$470 PW

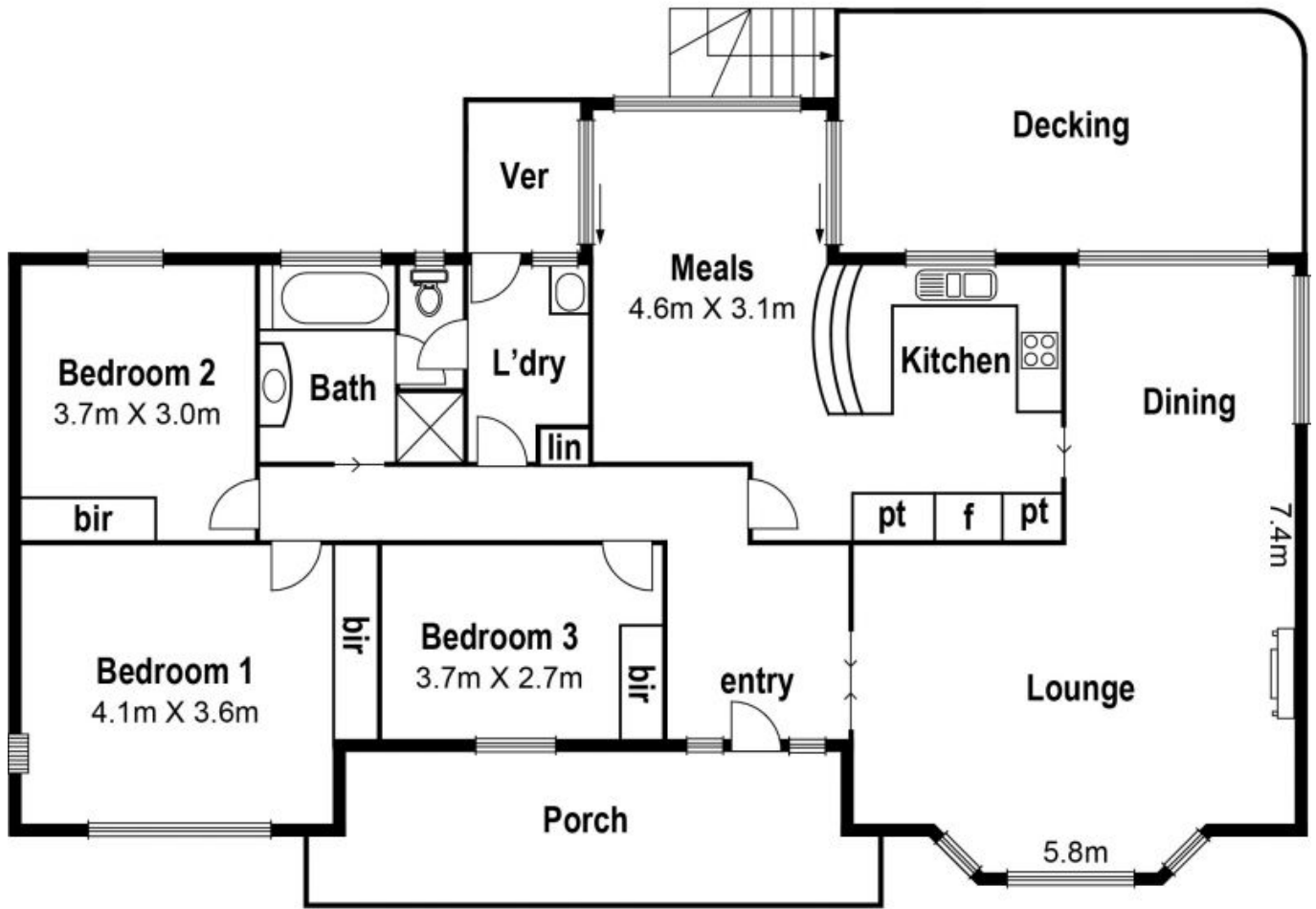


Michael Love

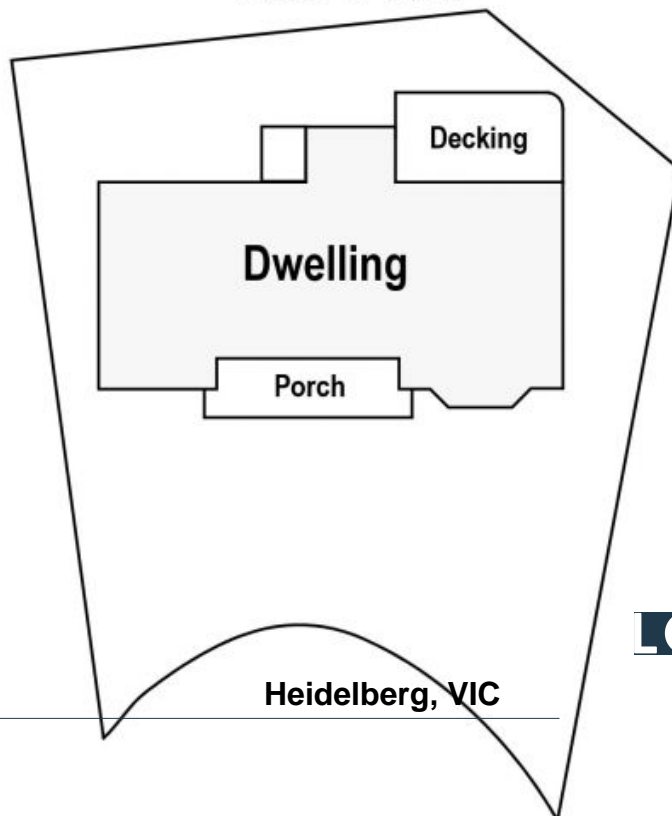
0400 106 577

loverealestate@mail.inspectreale

10 Essex Crt. Heidelberg



Site Plan



LOVE & CO

10 Essex Court

Heidelberg, VIC