



28 Eagle Avenue Kingsbury, VIC



### Your New Home!

Enhanced and brought to life with an attractive list of extras is this freshly painted family home which will enable a terrific lifestyle.

The floor plan comprises of three bedrooms all with built in robes. A central sparkling bathroom with separate bath, large lounge to front of the home, updated kitchen/meals area with dishwasher and more cupboard space than you will know what to do with. Additional highlights of the home include Ducted heating & Evaporative cooling, polished timber floors throughout, secure lock up garage and low maintenance front and rear garden. Meticulously maintained throughout all you need to do is collect the keys and move right in?

Closely located to local primary and secondary schools, Plenty Road public transport options & Link Street shopping strip, this is one house you will see and fall in love with.

PLEASE NOTE: Roller shutters are not included

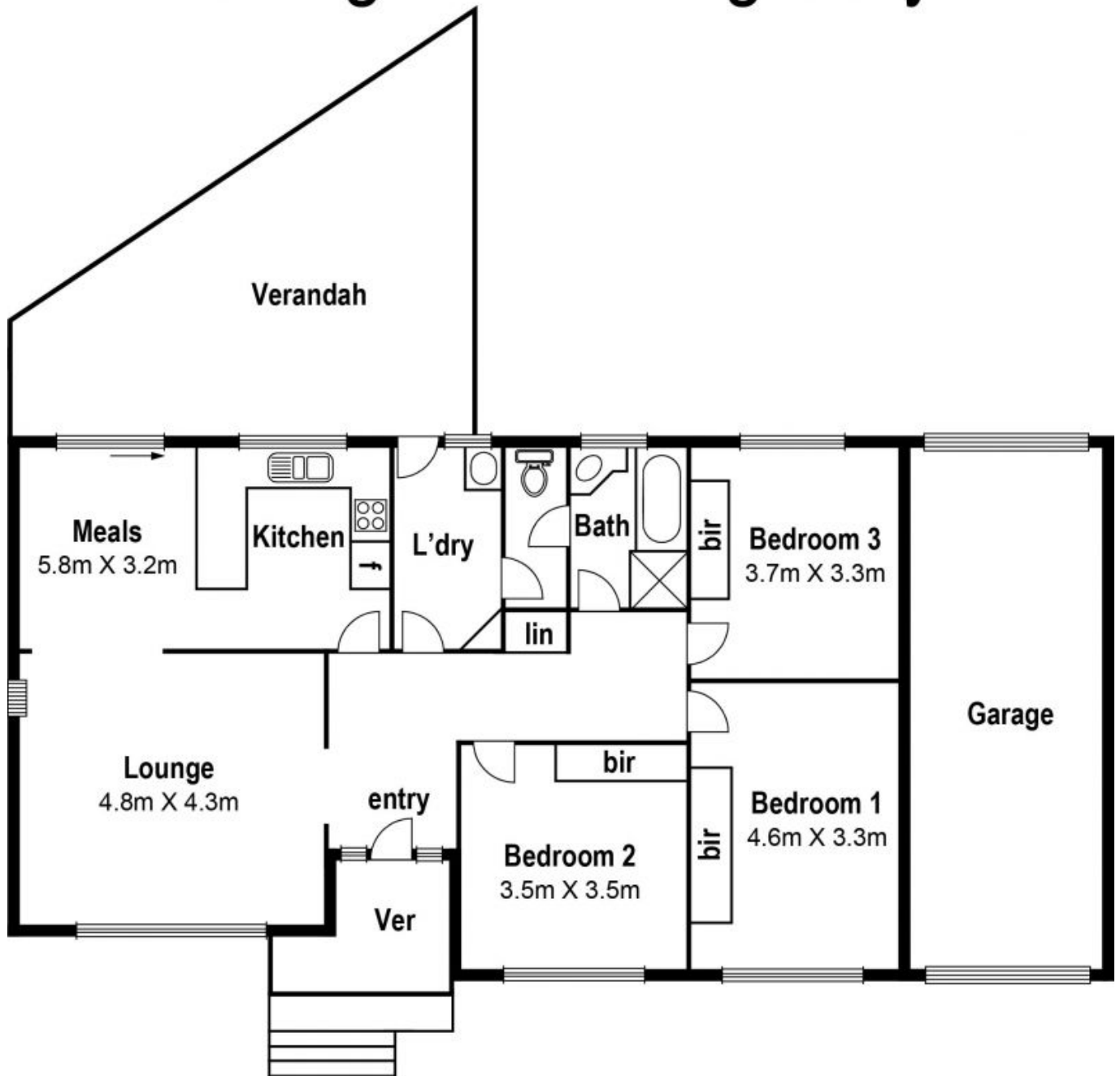
**Price:** \$350-\$370 PW



**Rachael Wallace**

loverealestate@mail.inspectreale

# 28 Eagle Ave. Kingsbury



## Site Plan

