



8 Derby Drive Epping, VIC



Perfectly Presented, Meticulously Maintained

Easy family living describes just about everything about this delightful, meticulously maintained home and its excellent position just 250 m from the bus and Greenbrook Shopping Village.

Set on generous allotment this appealing brick home includes decorative cornice, glossy polished timber floors, and unmarked paint and ducted cooling and heating leading a long list of features.

The main bedroom includes an updated ensuite, while the remaining two bedrooms are well served by an enormous family bathroom. A sunken living room complements family living meals integrating the kitchen featuring stainless steel dishwasher and 900 mm Omega range.

Sliding doors open to an expansive tiled alfresco area in the generous rear yard where you'll discover a garage introducing workshop space. Adding to the appeal, Epping Plaza and station and South Morang station and Westfield are all within easy reach.

Price: \$590,000 - \$649,000

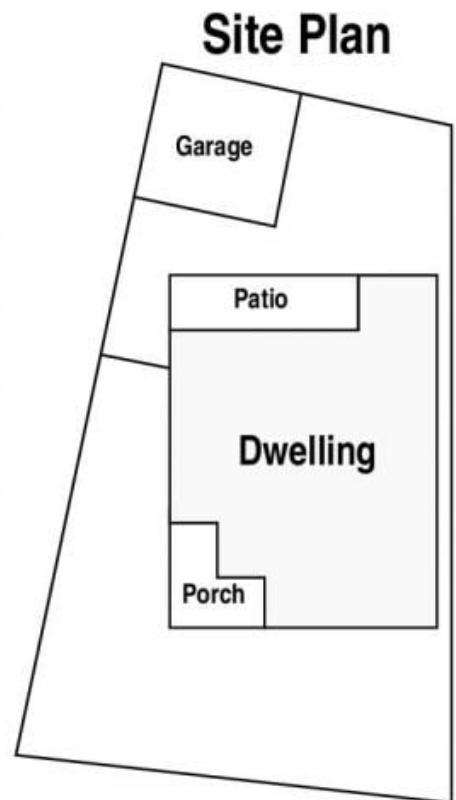


George Stathopoulos & **Jim Kalakias**

0403 053 836
george.s@lovere.com.au

0402 177 336
jim.k@lovere.com.au

8 Derby Drive Epping



The information contained herein has been obtained through sources deemed to be reliable as to its accuracy. Any information of special interest should be obtained through independent verification.

LOVE & CO

8 Derby Drive

Epping, VIC