



25 Pommel Crescent Epping, VIC



### Family Living With An Alfresco Focus

A superb landscaped garden delivering summer shade, winter sun and year-round colour complements the perfect presentation of this three bedroom home designed around an absolutely superb alfresco focus.

Inside you'll discover a spacious living room under cathedral ceilings, family meals overlooked by a timber kitchen and three bedrooms including main enjoying the ensuite convenience of direct access to the main bathroom. Ducted heating and cooling, wood fire heater and air-conditioner cover all bases for year round comfort.

A huge decked area complete with a Bali Hut delivers fabulous outdoor entertainment spaces, while linking the house to an air-conditioned teen retreat/studio/home office.

The multi vehicle carport, secure behind an auto door, complements a garage with fitted work bench and mezzanine storage.

**Price:** \$550,000 - \$595,000

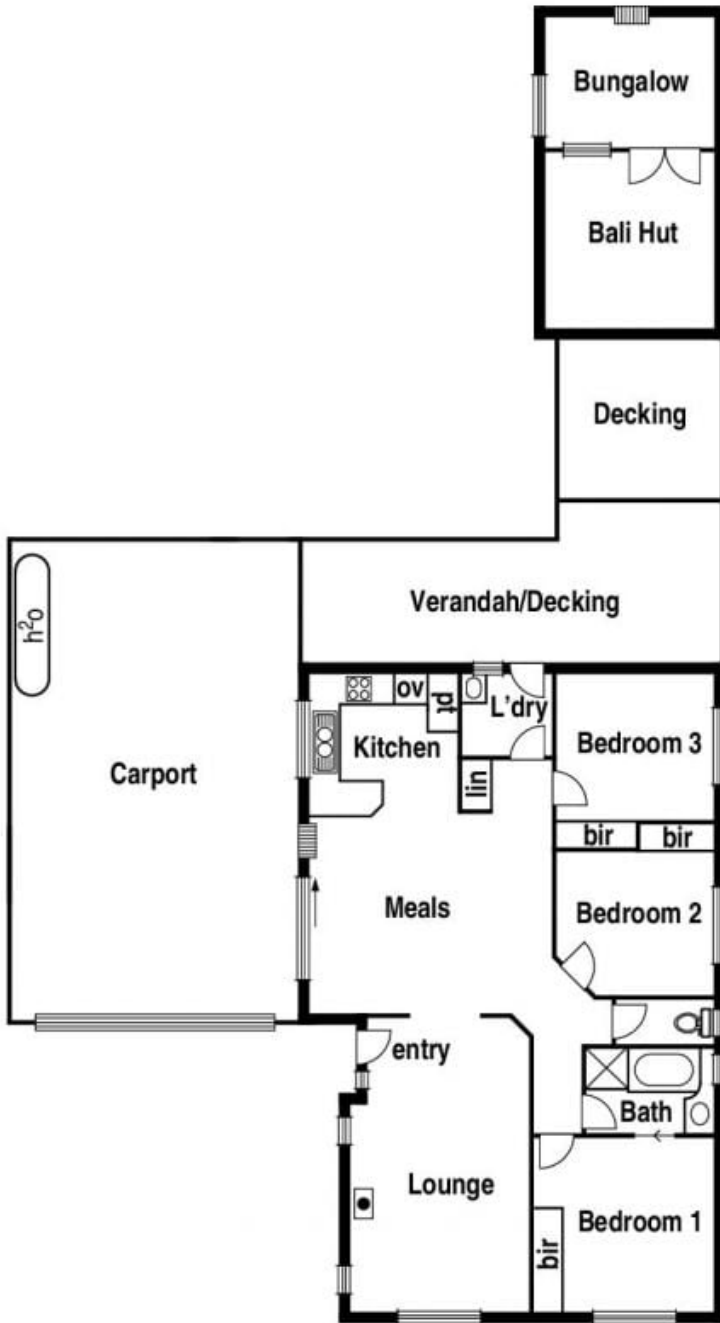


**Jim Kalakias**  
0402 177 336  
jim.k@lovere.com.au

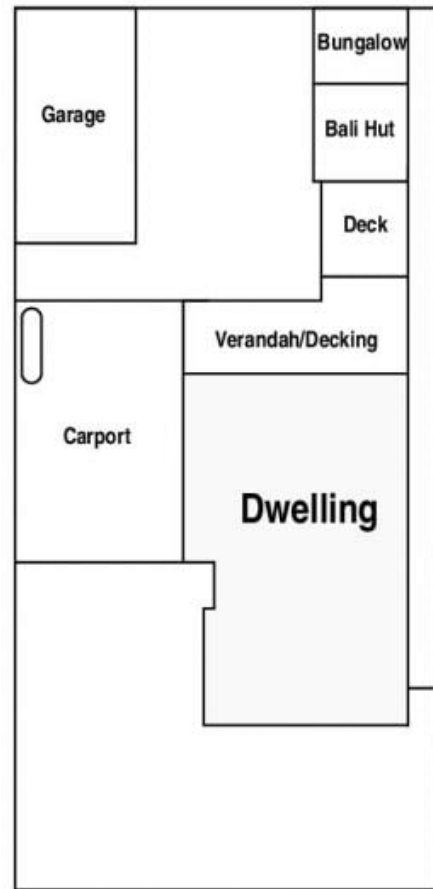


**George Stathopoulos**  
0403 053 836  
george.s@lovere.com.au

# 25 Pommel Crescent, Epping



## Site Plan



The information contained herein has been obtained through sources deemed to be reliable but cannot be guaranteed as to its accuracy. Any information of special interest should be obtained through independent verification.

**LOVE & CO**

25 Pommel Crescent Epping, VIC