



24 Woolshed Avenue Mernda, VIC

 3

 2

 2

MERNDA MARVEL

Situated in the highly sought after Woodland Waters Estate, close to schools and shops and only a short walk to the bus stop, this lovely three bedroom home is sure to please.

Comprising;

- Three good sized bedrooms
- Ensuite and walk in robe to master
- Built in robes to remaining bedrooms
- Two living areas
- Alfresco
- Double garage with drive through access

Rental price: \$350pw, \$1,521pcm

Bond: \$1,521

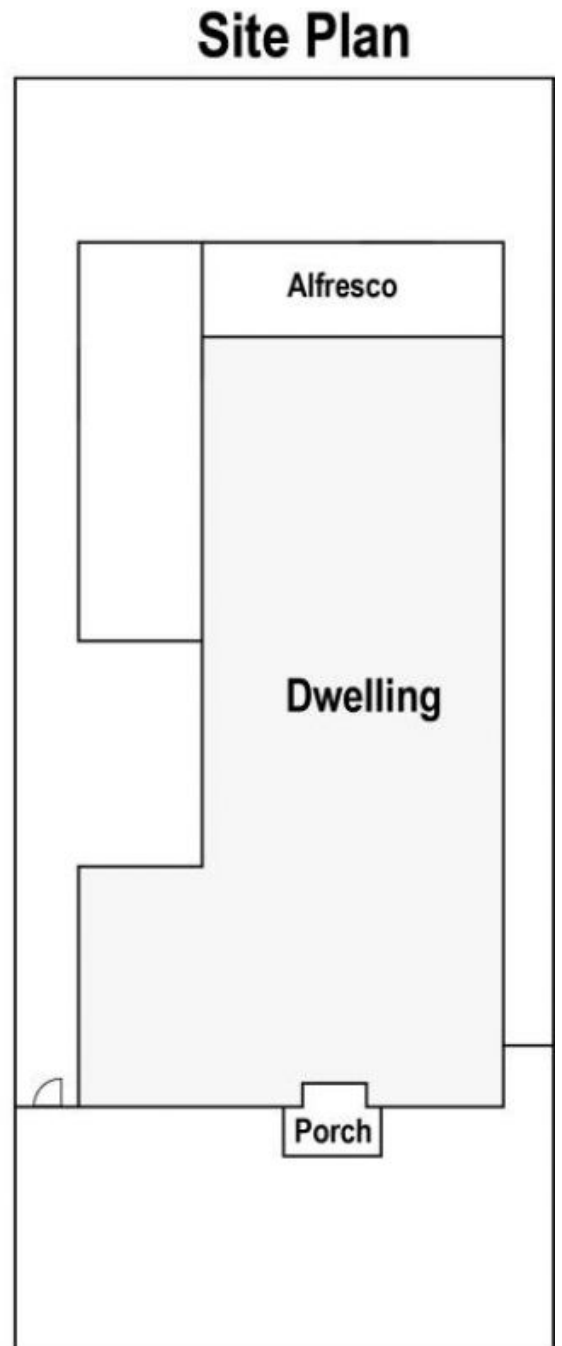
Price: \$350 per week

LOVE & CO

Love Epping

epping@lovere.com.au

24 Woolshed Ave. Mernda



24 Woolshed Avenue

Mernda, VIC

LOVE & CO