



7 Snugburgh Way Epping, VIC

3

2

1

### Everything You Need For Modern Living

Positioned in one of Aurora Estates premier locations, with the general store, cafe, kinder and Creed Farm, shops and transport just around the corner, no detail has been spared in the design and construction of this quality, single level home.

The open plan chef's kitchen is both large and impressive, with expansive stone bench tops, sleek white cabinetry, 900 mm Blanco range plus a convenient breakfast bar for meals on the run.

Sliding doors seamlessly unite both the expansive formal living room and the light filled family living/meals with an entertainers deck creating perfect indoor-outdoor entertaining zones, a must for modern living

The main bedroom enjoys the added luxury of a walk-in-robe and stone finished ensuite. Both the remaining bedrooms have easy access to a family bathroom of equal quality, with one of them opening to a second deck with a heated spa.

**Price:** \$413,500



**Bijan Rahimi**

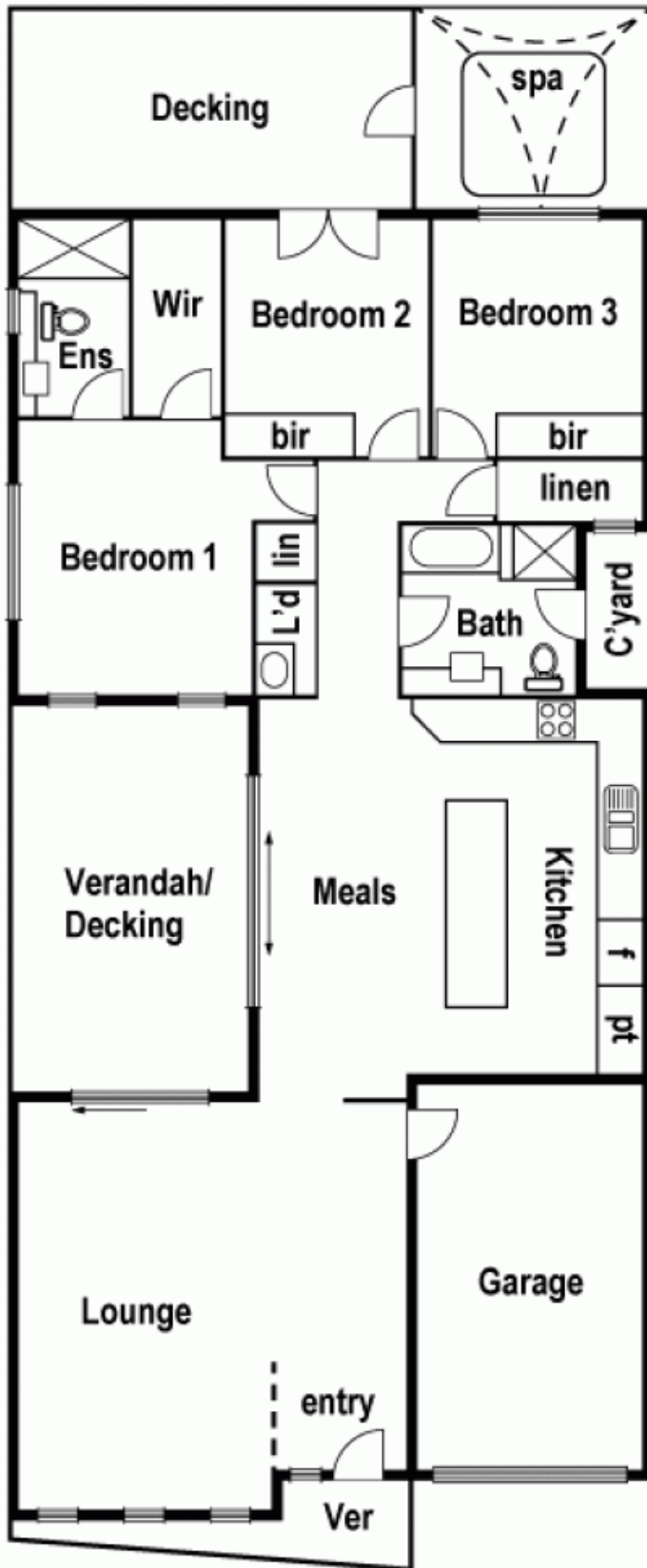
0451 515 301  
bijan.r@lovere.com.au



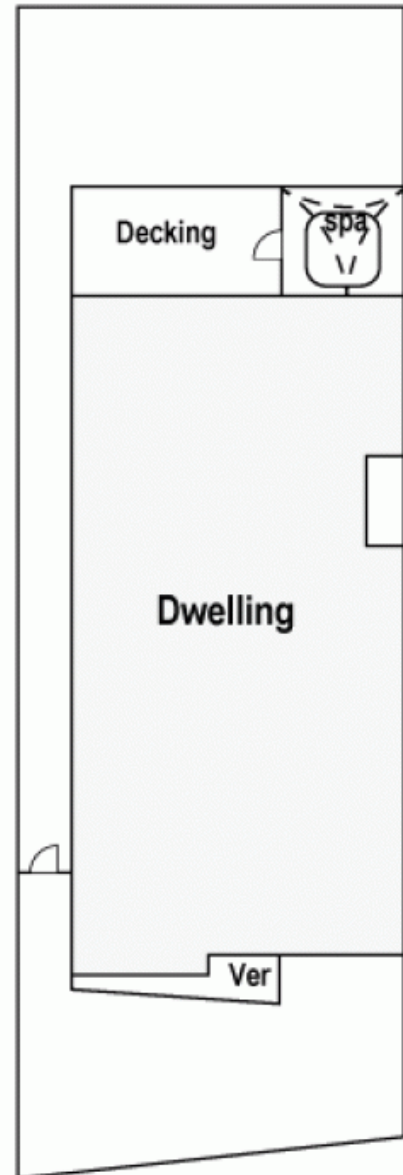
**Jim Kalakias**

0402 177 336  
jim.k@lovere.com.au

# 7 Snugburgh Way, Epping



## Site Plan



7 Snugburgh Way

Epping, VIC

LOVE & CO