



46 Zara Close Bundoora, VIC



Brand New Home with Desirable Views!

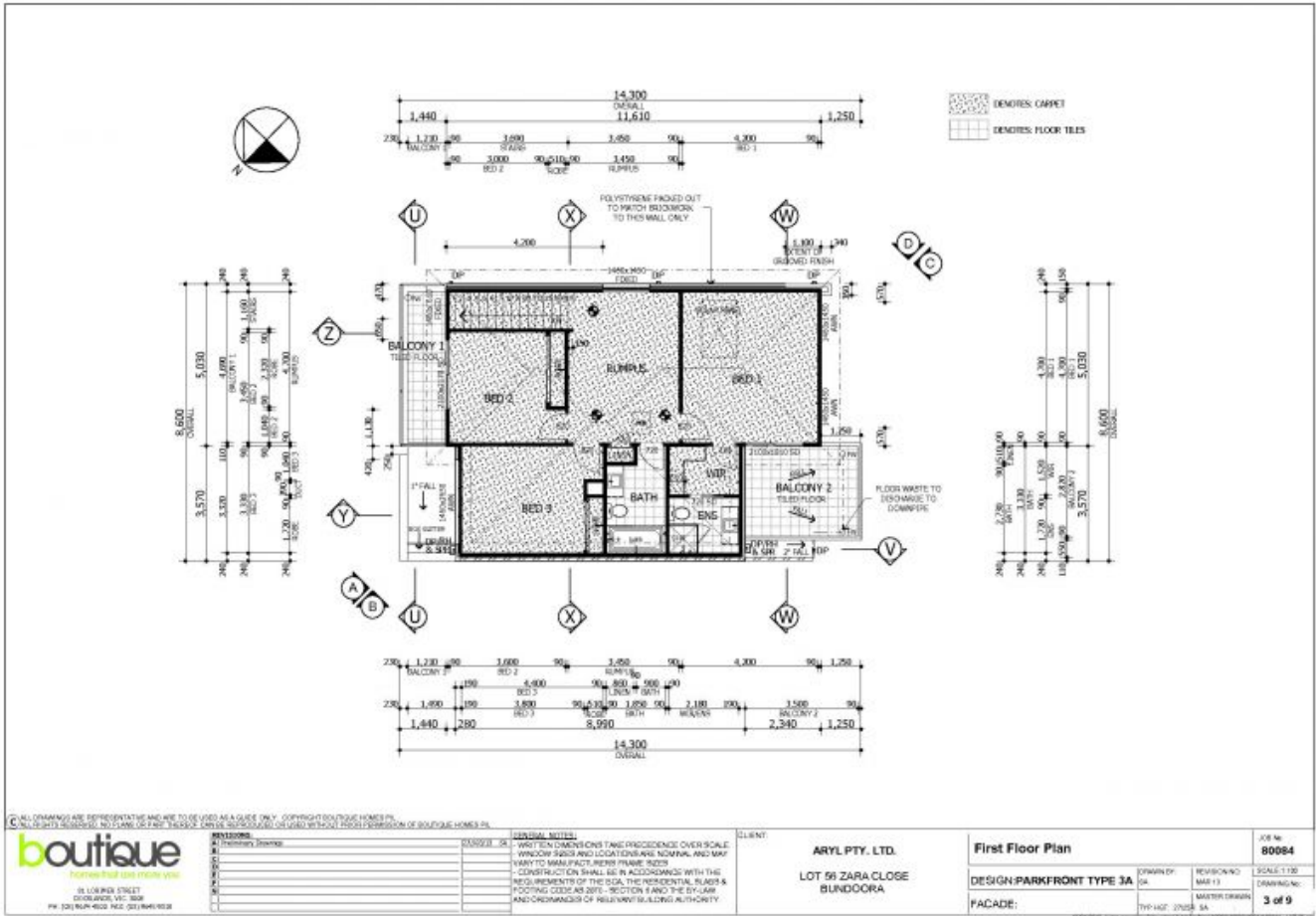
Striking from every aspect, step through the entrance hall and be wowed by the quality kitchen equipped with sophisticated appliances, ample storage space and adjoining meals area, transitioning into the immaculate and spacious open plan living that opens out to the effortless entertaining area with exceptional views perfect for that summer barbeque with friends. Upstairs you will find a large rumpus room that leads through to a central bathroom with shower over bath and toilet, two double bedrooms both with BIR's and one with access to a private balcony. You will also find a huge master bedroom complemented by another private balcony with views out to the tranquil parklands and a WIR that leads through to a sparkling ensuite with shower and toilet. Completing the package is a double remote garage, down stairs powder room and heating and cooling throughout. With access to public transport, RMIT University and only a short stroll to Uni Hill's vibrant culture including cafes, restaurants, DFO shopping outlets and fitness centre, you will not want to miss out on what this property has to offer!

Price: \$495 per week



Michael Love

michael.l@lovere.com.au



ALL DRAWINGS ARE REPRESENTATIVE AND ARE TO BE USED AS A GUIDE ONLY. COPYRIGHT BOUTIQUE HOMES PTY LTD. ALL RIGHTS RESERVED. NO PART OF THIS DOCUMENT IS TO BE REPRODUCED OR USED WITHOUT THE WRITTEN PERMISSION OF BOUTIQUE HOMES PTY LTD.

boutique
 homes that use more style
 88 LOUNDA STREET
 BUNDOORA VIC 3083
 PH: (03) 9404 4022 FAX: (03) 9404 9038

| NO. | REVISION | DATE | BY |
|-----|-------------------|-------------|----|
| 1 | ISSUED FOR PERMIT | 03/03/21 SA | SA |
| 2 | | | |
| 3 | | | |
| 4 | | | |
| 5 | | | |

GENERAL NOTES:
 - WRITTEN DIMENSIONS TAKE PRECEDENCE OVER SCALE.
 - WINDOW SIZES AND LOCATIONS ARE NOMINAL AND MAY VARY TO MANUFACTURE FRAME SIZES.
 - CONSTRUCTION SHALL BE IN ACCORDANCE WITH THE REQUIREMENTS OF THE DECA, THE RESIDENTIAL RULES & FOOTING CODES AS 2010 - SECTION 8 AND THE BY-LAW AND ORDINANCES OF RELEVANT BUILDING AUTHORITY.

CLIENT:
 ARYL PTY. LTD.
 LOT 56 ZARA CLOSE
 BUNDOORA

| First Floor Plan | | JOB NO: | |
|---------------------------|---------------------|--------------|--------|
| DESIGN: PARKFRONT TYPE 3A | OWNER: SA | REVISION NO: | 80064 |
| FACADE: | DATE: 11 | SCALE: 1:100 | |
| | TYPE: HGT. 27058 SA | DRAWING NO: | 3 of 9 |



46 Zara Close

Bundoora, VIC